



SPACE FOR LEASE ▾


 **21HUNDRED**
SOUTH TRYON



ABOUT THE PROPERTY ▾



2100 S. Tryon is an 80,000 SF Class-A office building with ground level retail located in the massively popular South End neighborhood of Charlotte, NC. South End has attracted new-to-market retail concepts and is home to many of Charlotte's favorite restaurants, coffee shops, specialty shops and fitness options. Additionally, the property is surrounded by new multifamily development. There are over 9,000 units under construction or delivered within 1 mile of the site.

 2100-2120 S. Tryon Street, Charlotte, NC 28203

Retail Available	1,477 RSF - Vanilla Box Delivery
Office Available	2,296 SF - Freestanding Single-Tenant
Timing	Delivers Immediately

- Site Features**
- High Visibility Corner
 - Abundant Surface Parking
 - South End Neighborhood



PROPERTY DETAILS

LOCATION

SITE PLAN

CONTACT

NEARBY RETAIL ▾



PROPERTY DETAILS

LOCATION

SITE PLAN

CONTACT



NEARBY RESIDENTIAL ▾

EXISTING UNDER CONSTRUCTION / PLANNED



PROPERTY DETAILS

LOCATION

SITE PLAN

CONTACT



MAIN BUILDING RETAIL ▾

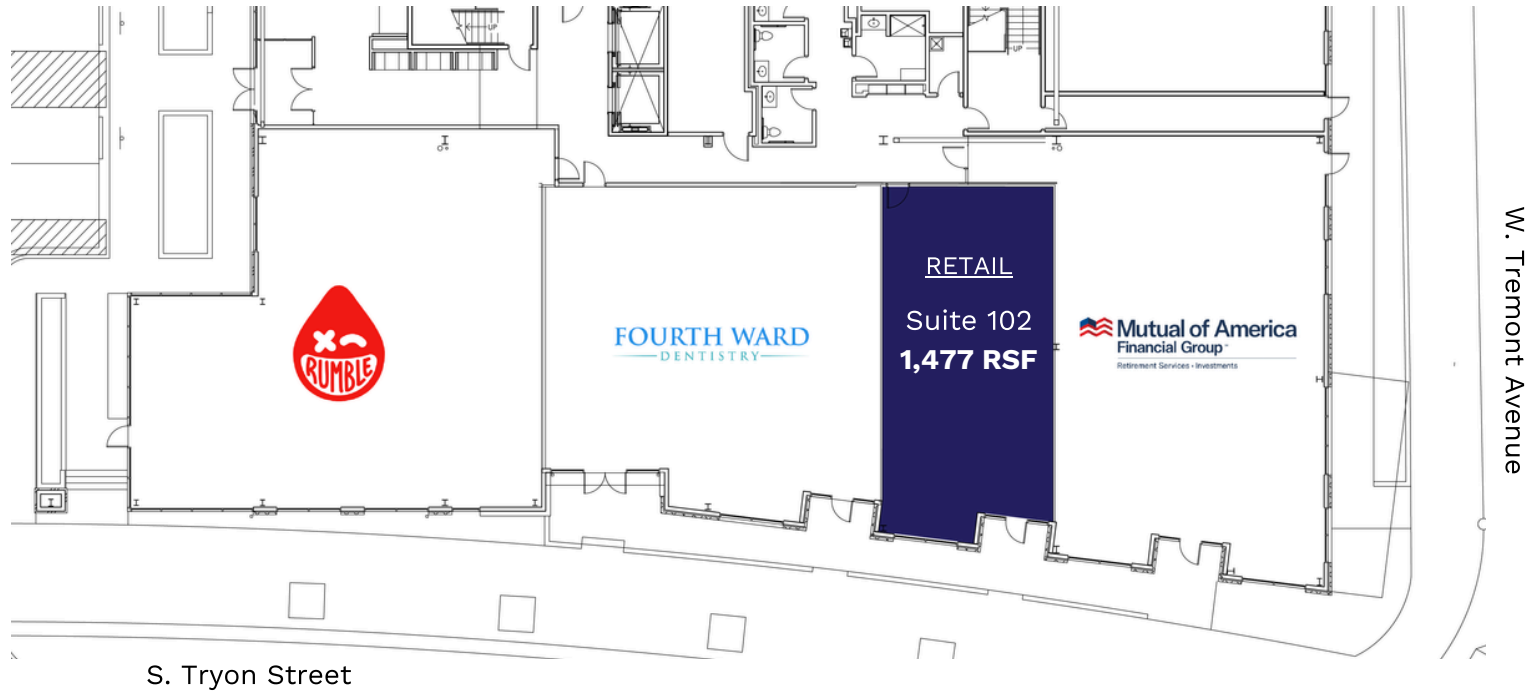


PROPERTY DETAILS

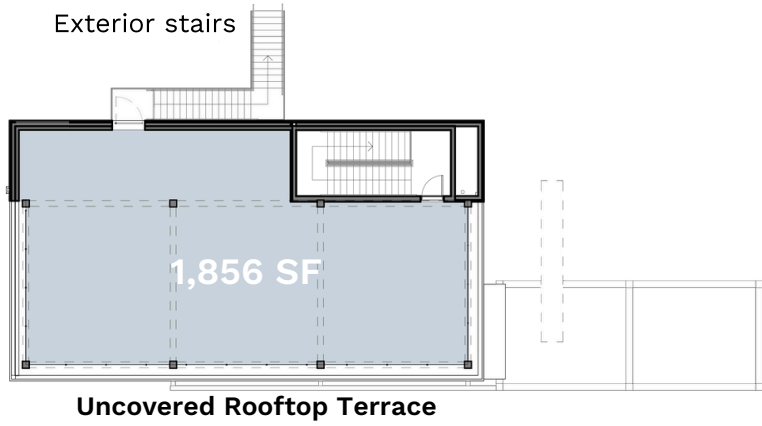
LOCATION

SITE PLAN

CONTACT



FREESTANDING OFFICE ▾



PROPERTY DETAILS

LOCATION

SITE PLAN

CONTACT



21HUNDRED SOUTH TRYON | CHARLOTTE, NC

21HUNDRED SOUTH TRYON



Peyton Gehron

Peyton@thriftcres.com

Lucy Butler

LButler@thriftcres.com



PROPERTY DETAILS

LOCATION

SITE PLAN

CONTACT