

REDEVELOPMENT

2115 E 7TH STREET
CHARLOTTE, NC



RETAIL FOR LEASE



PROPERTY DETAILS



2115 E 7th Street
Charlotte, NC 28204



Elizabeth
Neighborhood



1,011 - 3,363
SF Available



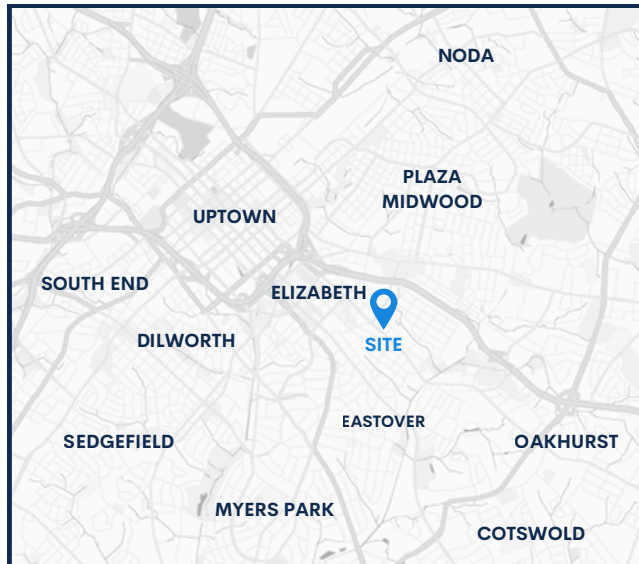
Surface parking
35 spaces



16,000 AADT
Traffic Count on E 7th St



ELIZABETH





CASWELL
STATION

Showmars

The Yard
MILKSHAKE BAR

Catalina
KITCHENS & BAR

barre3

Rosemont
MARKET & WINE BAR

THE Crumpleton

puerta



Biscuit
Belly

FLIGHT
A GATHERING PLACE

Jason
Miles
SUBS

sun'our
baking company

MADABOLIC

SITE



INTRODUCTION

LOCATION

SITE PLAN

RENDERINGS

CONTACT

RETAIL AERIAL



DEVELOPMENT MAP



INTRODUCTION

LOCATION

SITE PLAN

RENDERINGS

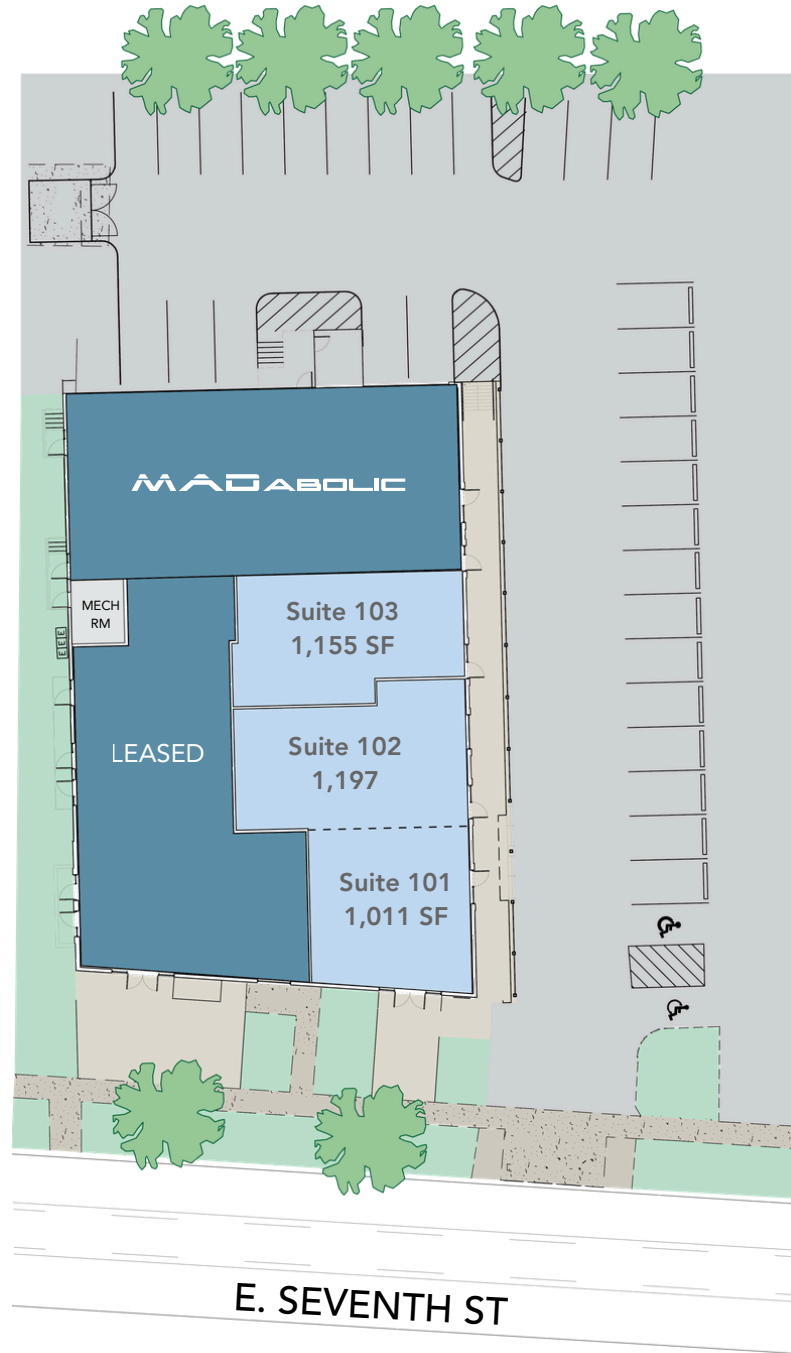
CONTACT





SITE PLAN

-  LEASED
-  AT LEASE
-  AVAILABLE





PROPOSED RENDERINGS

INTRODUCTION

LOCATION

SITE PLAN

RENDERINGS

CONTACT

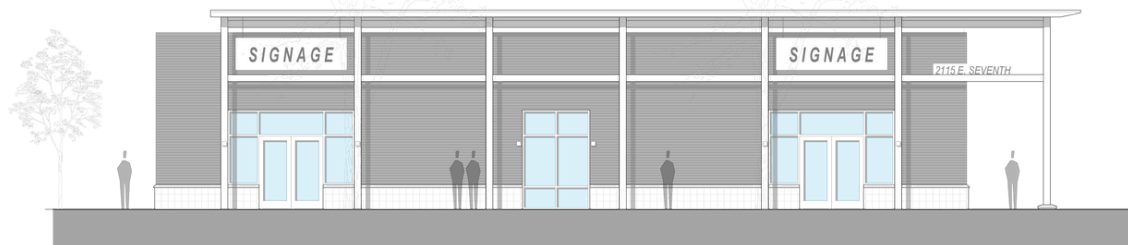




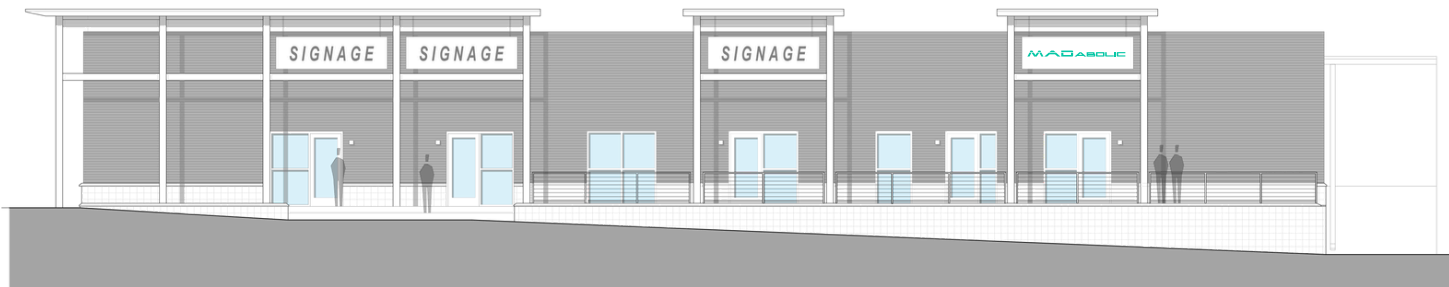
PROPOSED EXTERIOR IMPROVEMENTS



FRONT VIEW - 7TH ST



SIDE VIEW - PARKING LOT





INTRODUCTION

LOCATION

SITE PLAN

RENDERINGS

CONTACT



2115 E 7TH ST

Charlotte, NC

JAY MITCHENER
(704) 576-2772
jay@thriftcres.com

DAVID FELKNER
(704) 778-2204
david@thriftcres.com