




RETAIL FOR LEASE ▾

Savoy | Retail
Charlotte, NC





PROPERTY DETAILS ▾

 650 E. Brooklyn Village Ave, Charlotte, NC 28202

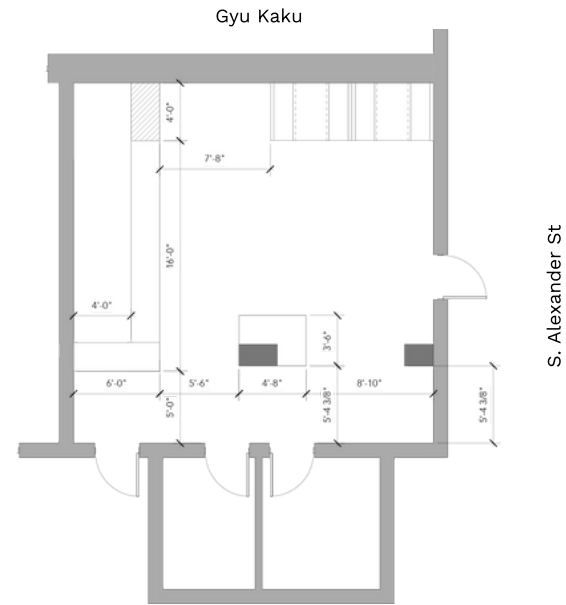
Space Available 900 SF Ground Level Retail

Delivery Condition 2nd Generation Taproom/Cafe

Target Use Cafe/Retail

Delivery Date Immediate

- Site Features**
- Easily accessible parking adjacent to retail space (6/1000 retail)
 - Located below 302 luxury apartments
 - Directly adjacent to future mixed-use development
 - Over 2,300 residential units within 0.5mi



Parking Deck Entrance



INTRODUCTION

LOCATION

SITE PLAN

CONTACT



650 E. BROOKLYN VILLAGE AVE | CHARLOTTE, NC

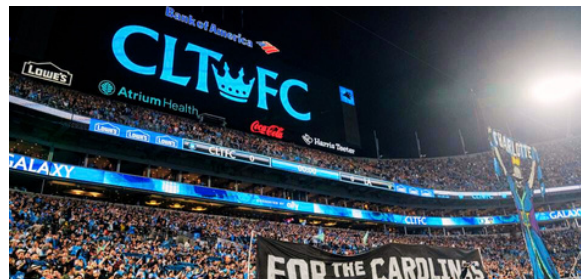
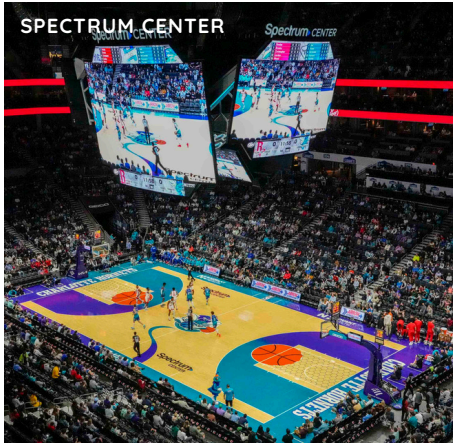


INTRODUCTION

LOCATION

SITE PLAN

CONTACT



INTRODUCTION

LOCATION

SITE PLAN

CONTACT



GET IN TOUCH ▾



Cliff Benson
 Cliff@ThriftCRES.com
 704-989-5476