



MEDICAL OFFICE FOR LEASE ▾

2620 E. 7th Street | Suite 200

Charlotte, NC 28204

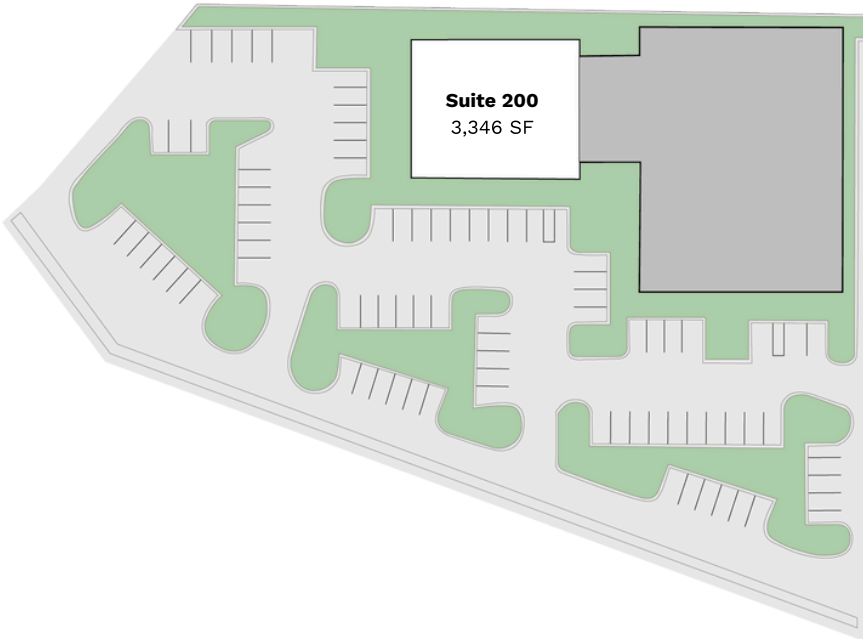





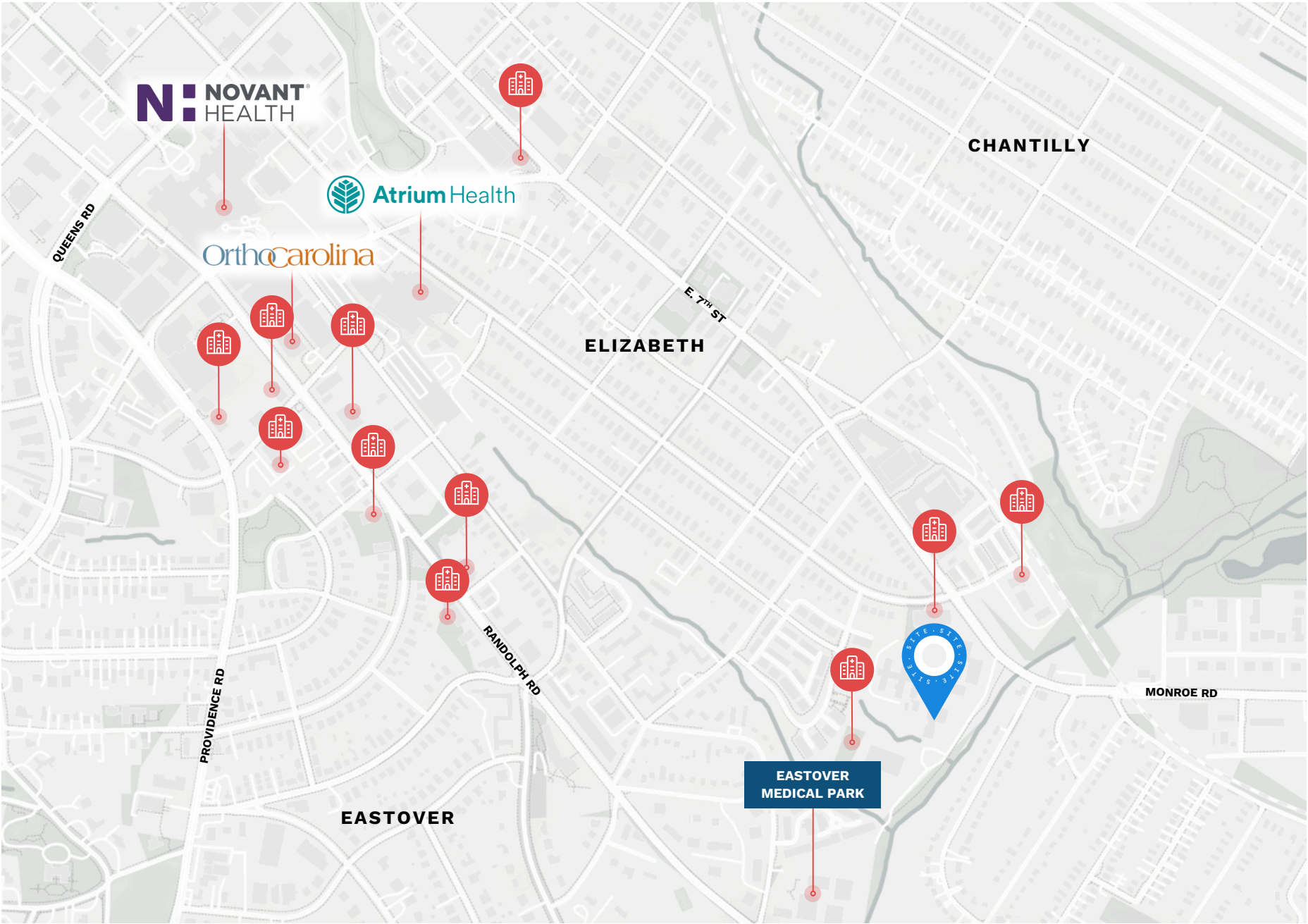
Prime medical office space available for lease in Eastover Medical Park, ideally located just 1.5 miles from Novant Health Presbyterian Medical Center.

This property offers close proximity to neighboring medical offices, including OrthoCarolina, making it a strategic choice for healthcare providers. The space is well-suited for a variety of medical uses, with excellent accessibility and visibility in a highly sought-after medical corridor and residential neighborhoods.

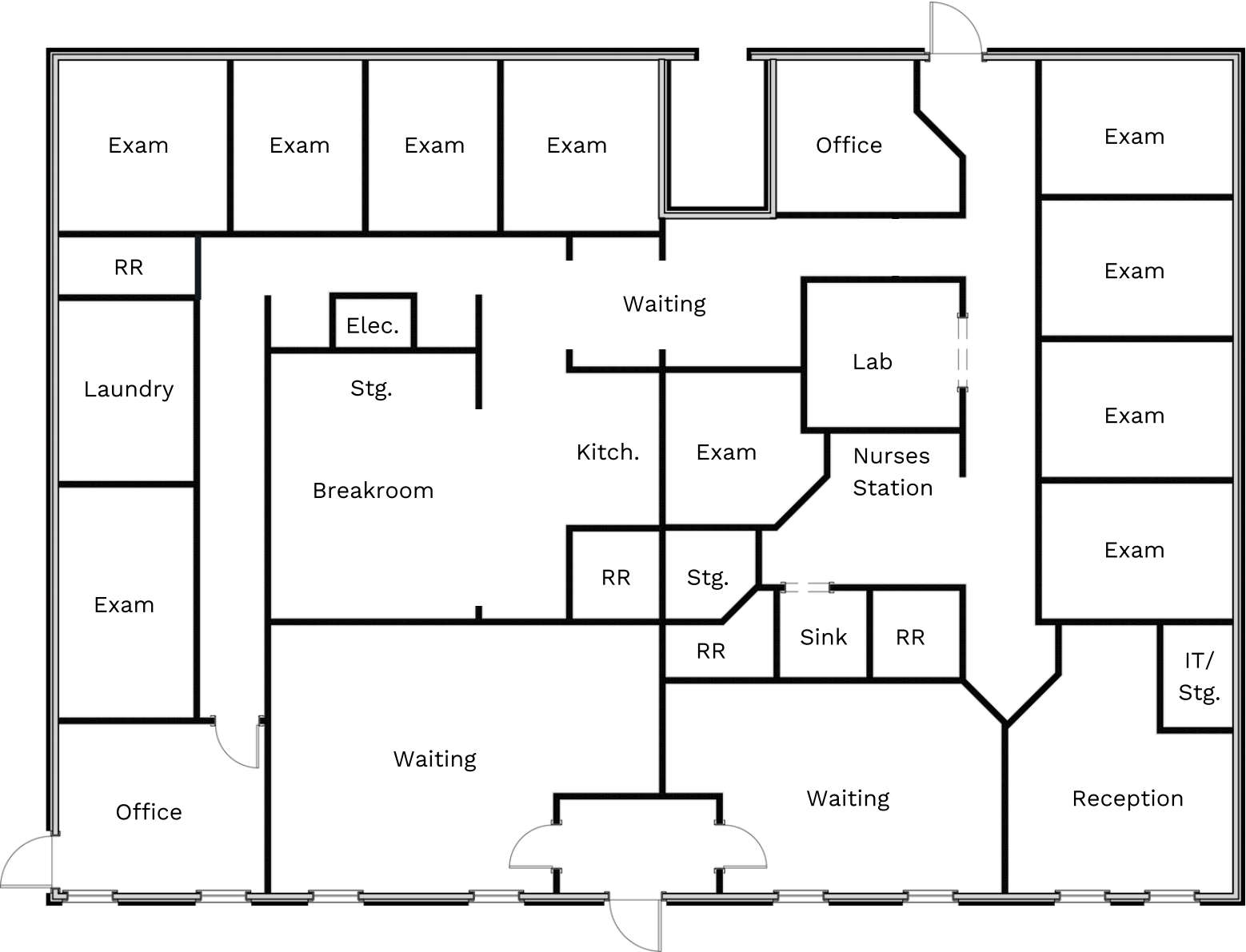
Suite 200 includes 12 private exam and lab rooms with 10 sinks, 3 patient waiting areas, 2 private offices, and ample storage. The space ideally accommodates a medical user.



 2620 E. 7 th St Suite 200 Charlotte, NC 28204	
Space Available	3,346 SF
Neighborhood	Elizabeth
Parking	Ample parking with on grade access
Condition	2nd Generation Medical Office



Suite 200 | 3,346 SF







2620 E. 7th Street | Suite 200
Charlotte, NC 28204

Stephen Woodard
(704) 905-4309
stephen@thriftcres.com