



FOR LEASE ▾

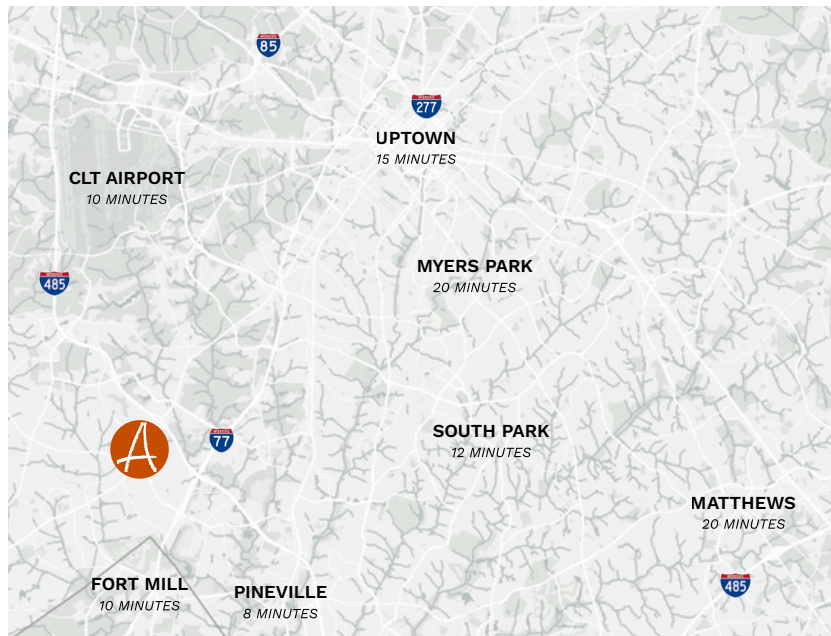
Ayrsley Town Center

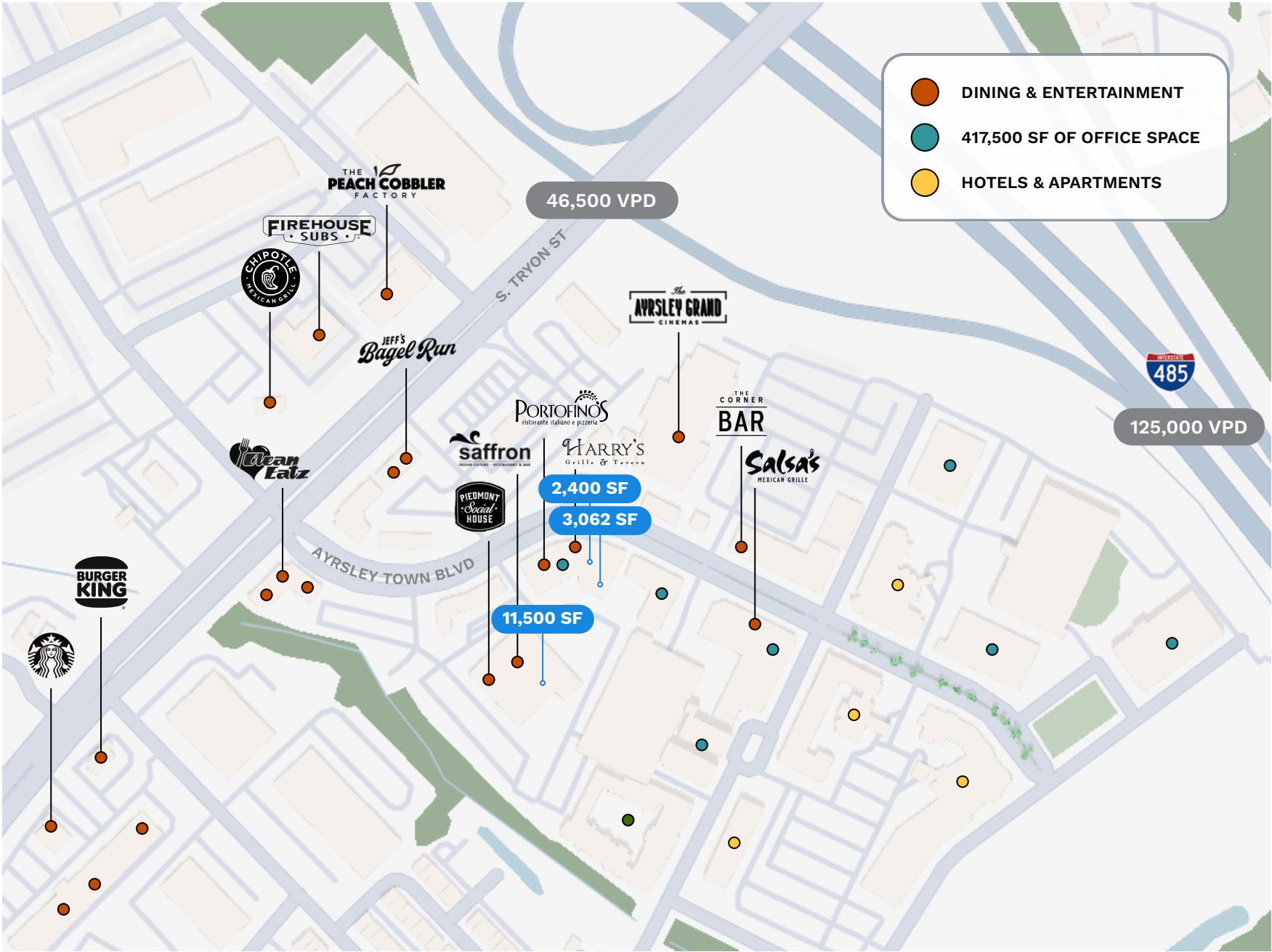
Charlotte, NC

Ayrsley Town Center


Ayrsley is Southwest Charlotte's most walkable community, conveniently located off I-485 and South Tryon. Stroll down Ayrsley Town Boulevard and pop into one of the 10+ restaurants and bars or grab a movie at Ayrsley Grand Cinemas with a friend.

Among the dining and entertainment options, the development offers over 400,000 SF of office space--located just steps away from four hotels with large meeting spaces, driving foot traffic throughout Ayrsley Town Center.

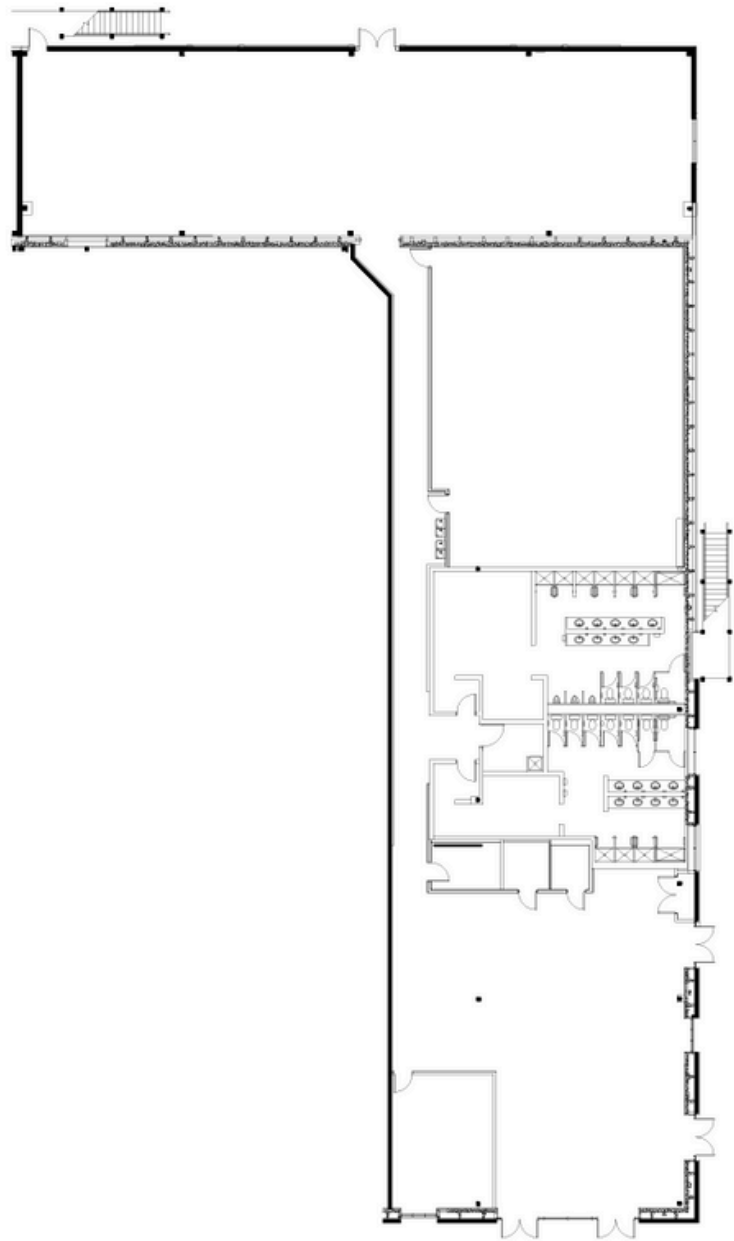





Availability:

 2135 Ayrsley Town Blvd. | Charlotte, NC 28273

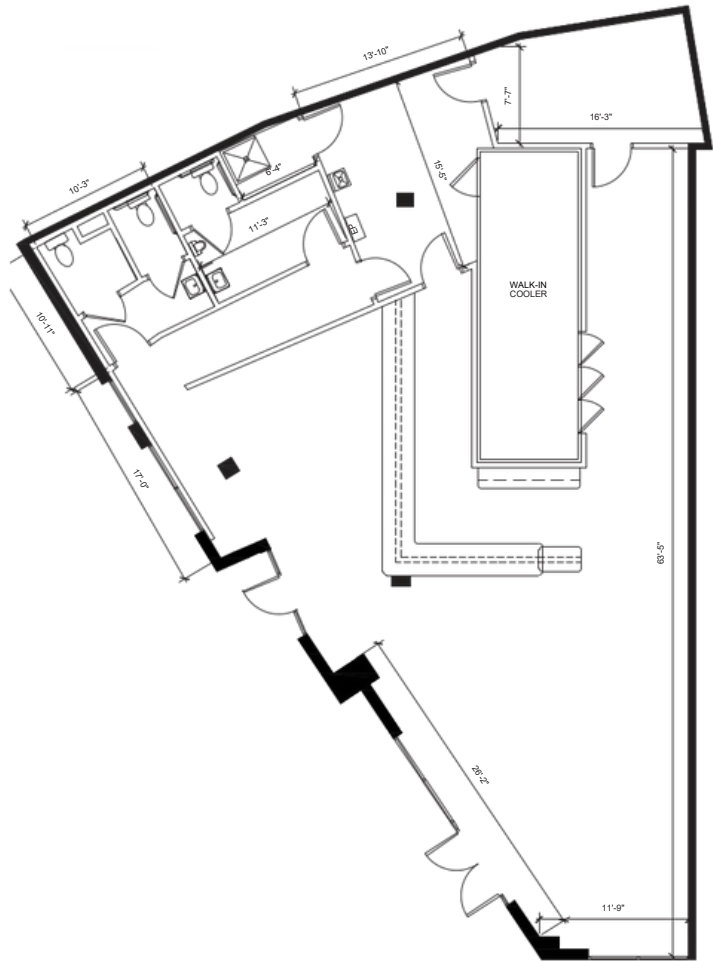
Space Available	11,500 SF
Delivery Condition	Second Generation Fitness
Target Use	Fitness
Site Features	<ul style="list-style-type: none">• Surface parking• Over 400,000 SF of office within development• Immediate access from I-485



Availability:


 2127 Ayrsley Town Blvd. Ste 101B | Charlotte, NC 28273

Space Available	2,400 SF
Delivery Condition	Second Generation Restaurant
Target Use	Retail, Food & Beverage
Site Features	<ul style="list-style-type: none">• Dedicated Surface parking• Central location within development• Immediate access from I-485



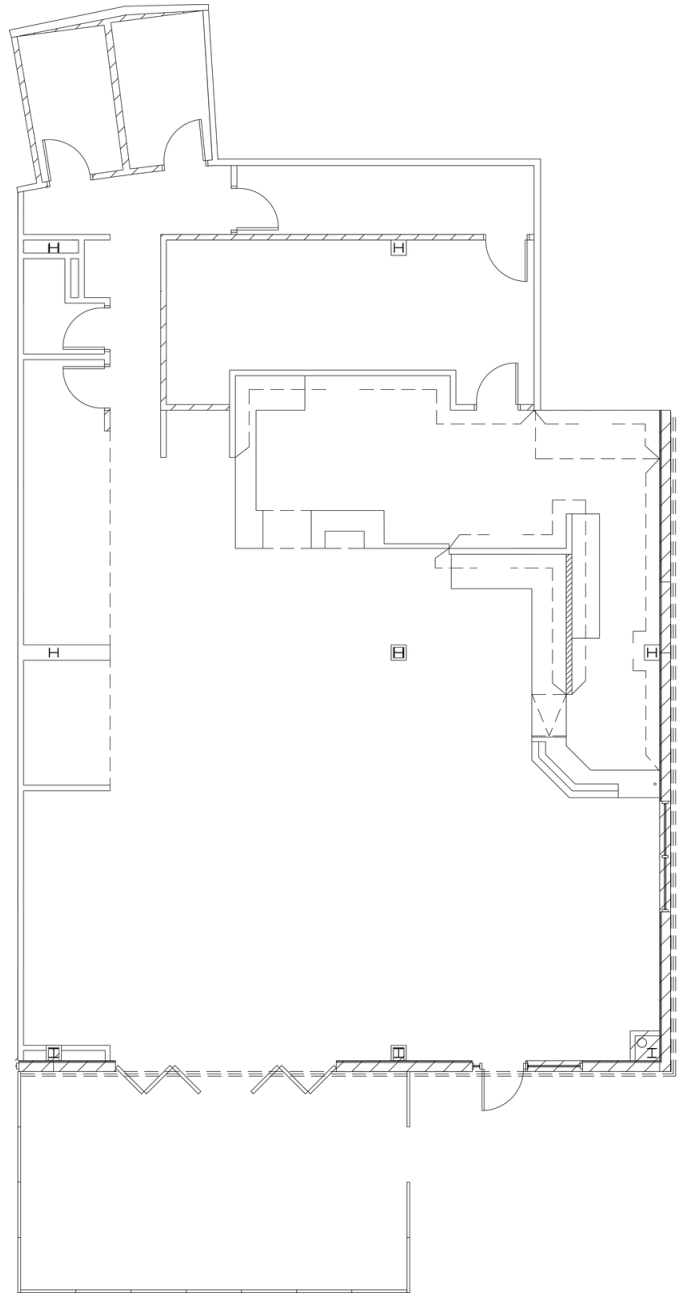


Availability:

 2127 Ayrsley Town Blvd. Ste 101A | Charlotte, NC 28273

Space Available	3,062 SF
Delivery Condition	Second Generation Restaurant
Target Use	Food & Beverage

- Site Features
- Dedicated Surface parking
 - Central location within development
 - Immediate access from I-485







LEASING ▾



Ayrsley Town Center

Charlotte, NC

Thompson Brock

thompson@thriftcres.com

(704) 661-8576