



RETAIL FOR LEASE ▾

519 & 521 Fenton Place

Charlotte, NC 28207





A Rare Freestanding Retail Gem in Eastover

519 & 521 Fenton Place present a unique opportunity to lease a standalone retail space in one of Charlotte’s most desirable neighborhoods. This charming former residence has been thoughtfully converted for commercial use, offering character and curb appeal that’s nearly impossible to find in Eastover. With its distinctive architecture, private setting, and prime location surrounded by affluent demographics, this property is ideal for boutique retail, specialty services, or destination concepts looking to stand out. Opportunities like this are truly rare — especially in a market where freestanding retail is in such limited supply.

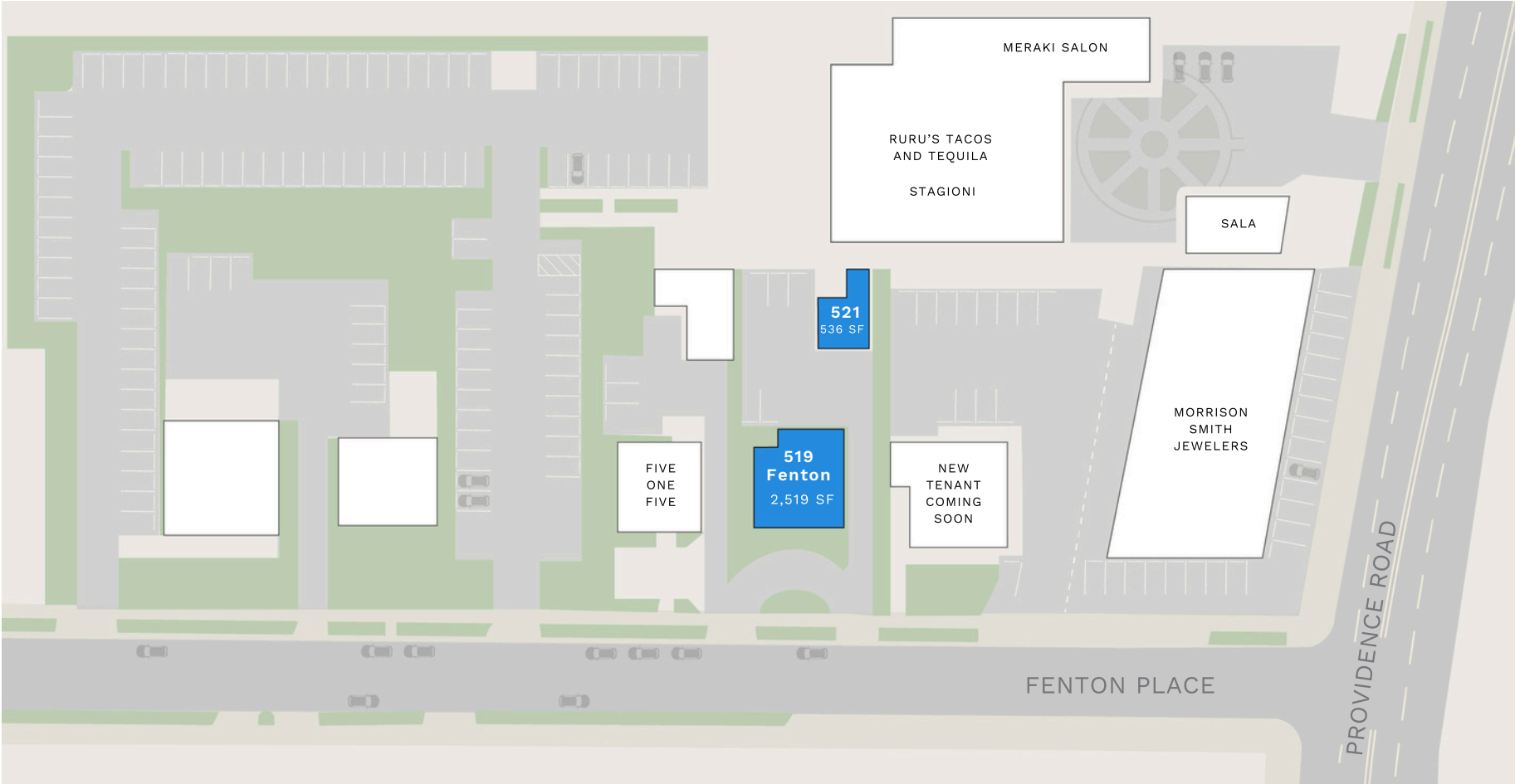


519 & 521 Fenton Pl, Charlotte, NC 28207

Space(s) Available	519: 2,519 SF Freestanding, two-story brick structure 2nd Generation Retail
	521: 536 SF 2nd Generation Retail

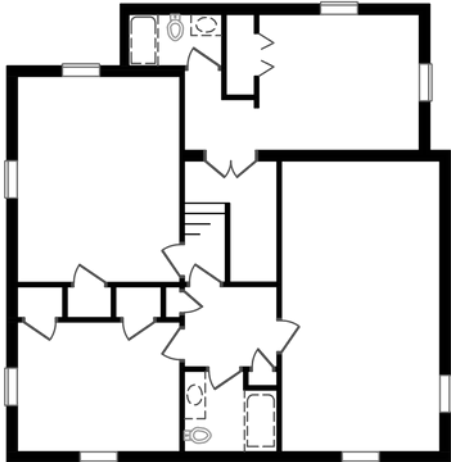
Site Features	<ul style="list-style-type: none">• Circular drive, ideal for quick drop-off• Desirable Eastover location• Walkable neighborhood retail• Rare opportunity



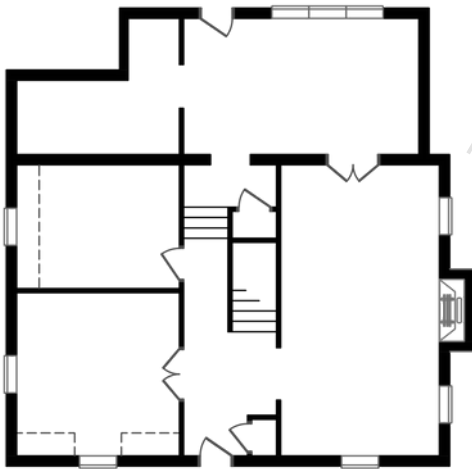


519 Fenton

SECOND LEVEL
1,259 SF



MAIN LEVEL
1,260 SF



Fenton Place



PROPERTY DETAILS

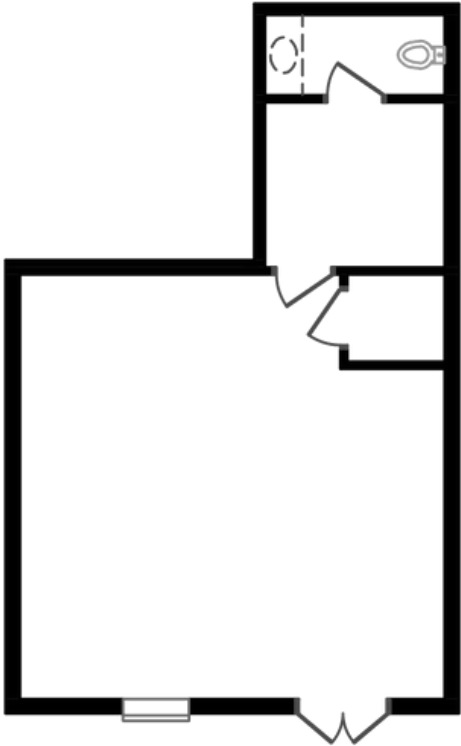
SITE PLAN

FLOOR PLAN

LOCATION

CONTACT

521 Fenton



536 SF



PROPERTY DETAILS

SITE PLAN

FLOOR PLAN

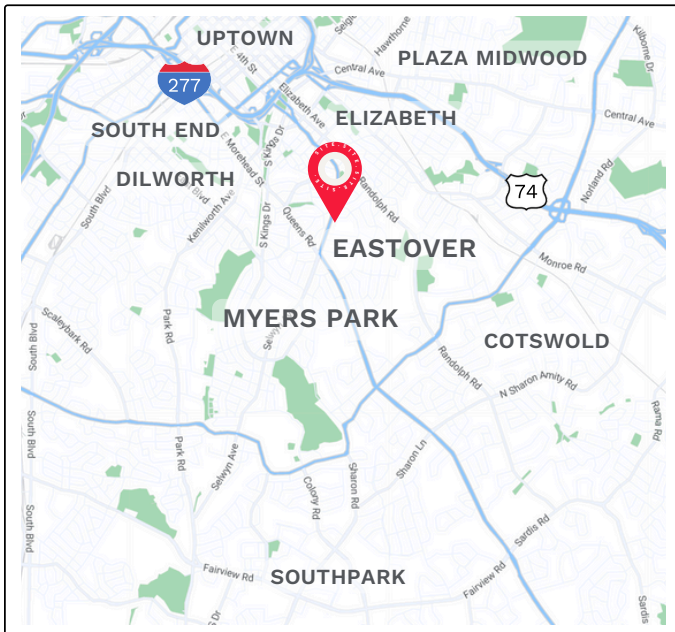
LOCATION

CONTACT

Myers Park/Eastover

Myers Park and neighboring Eastover are two of Charlotte's most affluent and sought after residential neighborhoods. With 100-year-old oak trees lining the streets and rows of stunning homes, they are easily two of the most beautiful neighborhoods in the Queen City.

Conveniently located near center city Charlotte, it is remarkably walkable and features a cluster of specialty shops, galleries, and neighborhood eateries. Anchored by the stately Queen's University, this area also boasts the elegant Duke Mansion, The Mint Museum and Freedom Park among its attractions.







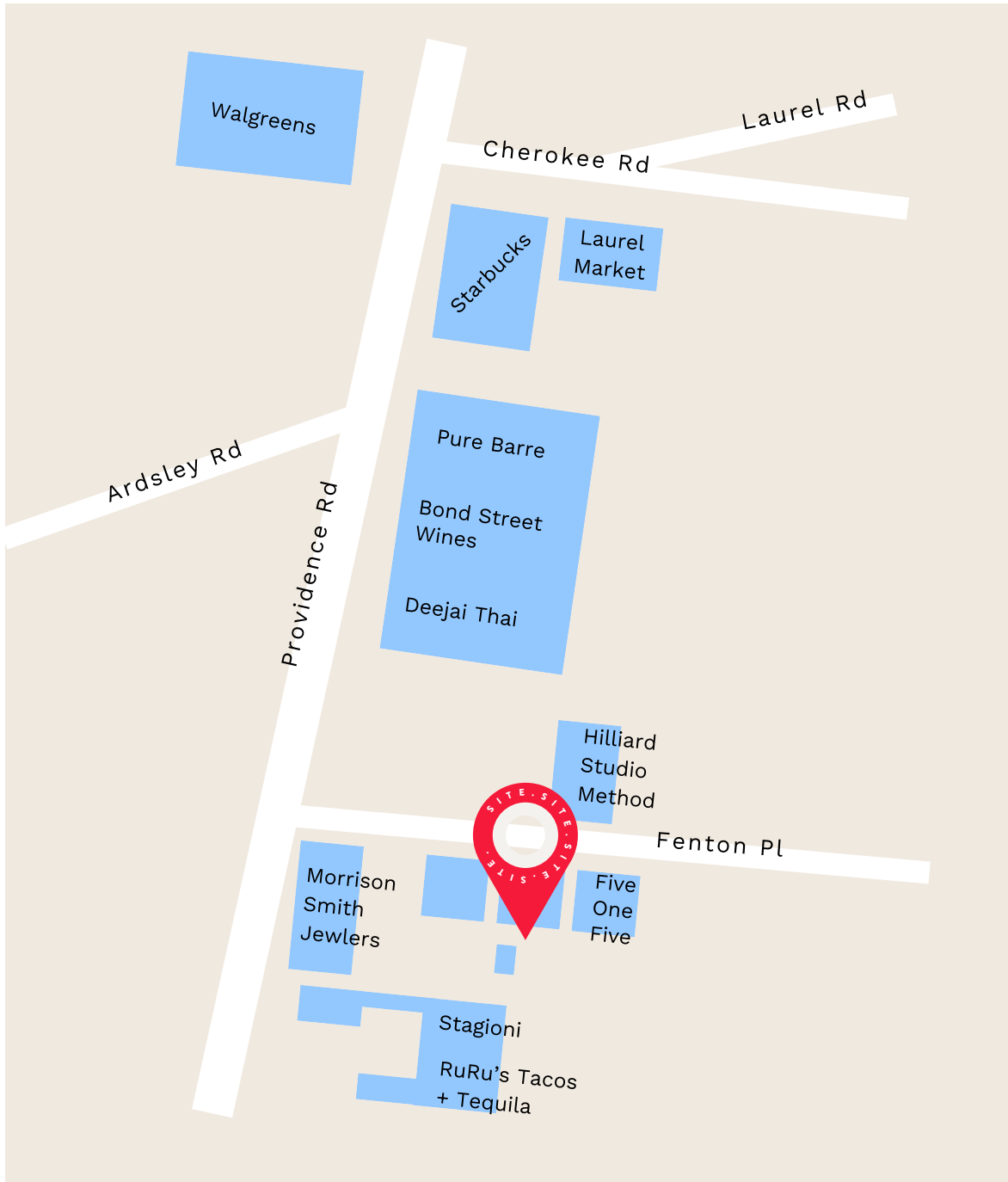
PROPERTY DETAILS

SITE PLAN

FLOOR PLAN

LOCATION

CONTACT



GET IN TOUCH ▾



Jay Mitchener

Jay@ThriftCRES.com

704-576-2772