

PLAZA MIDWOOD
COMMONWEALTH
CHARLOTTE, NC



WATCH THE VIDEO

RETAIL



OFFICE BUILDING
RETAIL

MULTIFAMILY
RETAIL

VINTAGE #2

VINTAGE #1

SINGLE
LEVEL
RETAIL

UPTOWN
CHARLOTTE

MAIN STREET

COMMONWEALTH

TWO PARTS VINTAGE, ONE PART NEXT BIG THING.

12 ACRE
MIXED-USE DEVELOPMENT

100K SF
RETAIL

150K
OFFICE

383
RESIDENCES

AMPLE
GREEN SPACE

LOCATION

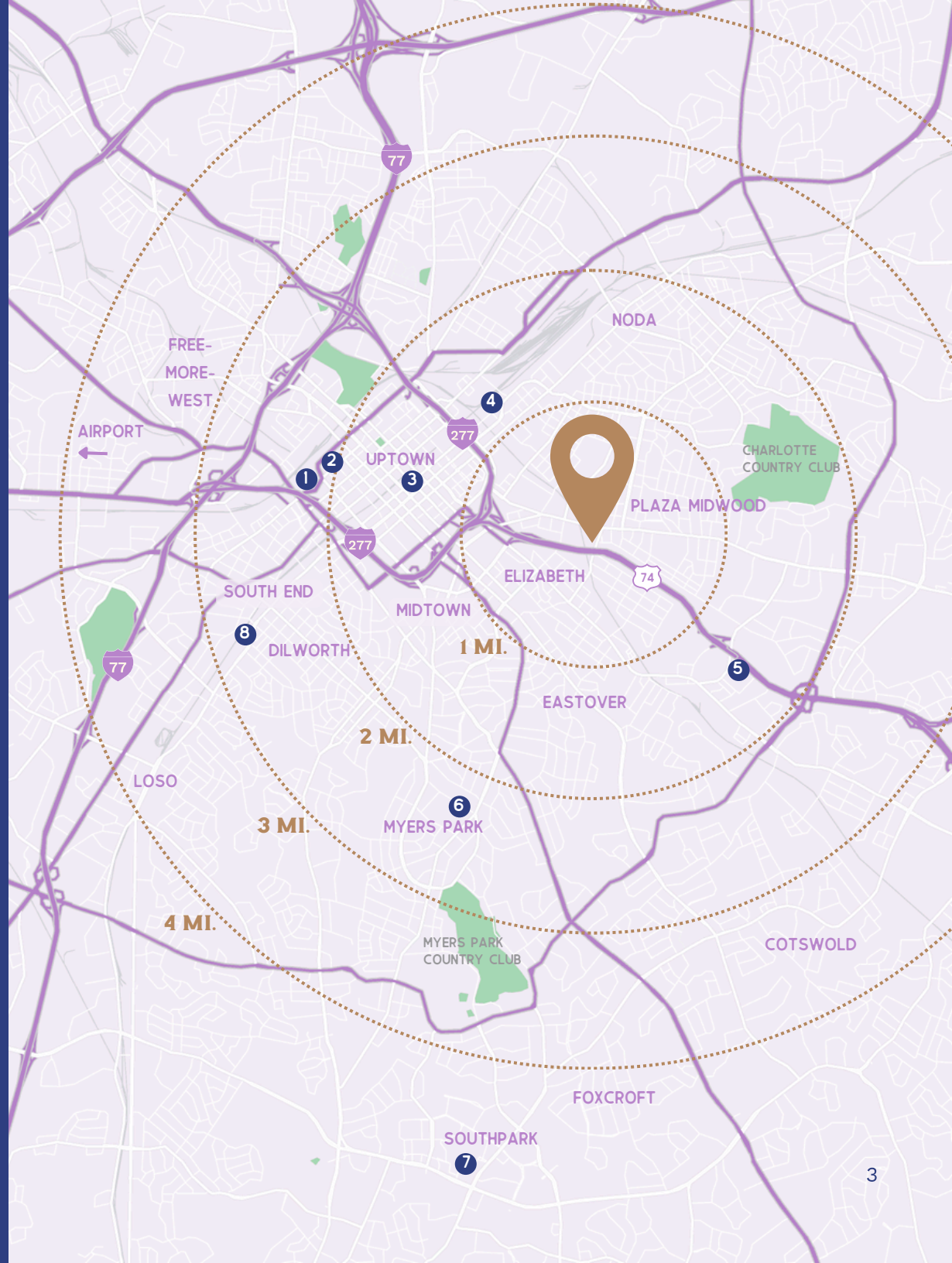
LOCATED JUST 1 MILE TO THE SOUTHEAST OF UPTOWN CHARLOTTE. COMMONWEALTH IS LOCATED IN THE HEART OF THE PLAZA MIDWOOD NEIGHBORHOOD.

CHARLOTTE LANDMARKS

1. BANK OF AMERICA STADIUM
2. TRUIST FIELD
3. SPECTRUM CENTER
4. OPTIMIST HALL
5. BOJANGLES COLISEUM
6. QUEENS UNIVERSITY
7. SOUTHPARK MALL
8. ATHERTON MILL

TRAVEL TIMES

| | |
|------------|------------|
| ELIZABETH | 2 MINUTES |
| MIDTOWN | 4 MINUTES |
| UPTOWN | 5 MINUTES |
| EASTOVER | 6 MINUTES |
| MYERS PARK | 7 MINUTES |
| DILWORTH | 10 MINUTES |
| SOUTH END | 10 MINUTES |
| COTSWOLD | 10 MINUTES |
| FOXCROFT | 14 MINUTES |
| SOUTHPARK | 15 MINUTES |
| AIRPORT | 19 MINUTES |



WELCOME TO PLAZA MIDWOOD

- URBAN WALKABLE COMMUNITY
- HOME TO CHARLOTTE'S FIRST SOCIAL DISTRICT
- CHARLOTTE COUNTRY CLUB
2 miles from commonwealth
- DENSE MULTIFAMILY
3,174 units within 1 mile
29,839 units within 3 miles



DEMOGRAPHICS

| | 1 MILE | 3 MILE | 5 MILE |
|--------------------|-----------|-----------|-----------|
| EST. POPULATION | 17,104 | 133,079 | 298,988 |
| EST. HOUSEHOLDS | 8,496 | 65,855 | 134,263 |
| AVG. HH INCOME | \$145,018 | \$142,109 | \$126,959 |
| AVG. HH SIZE | 2.0 | 2.0 | 2.2 |
| MEDIAN HOME VALUE | \$489,624 | \$471,074 | \$430,057 |
| MEDIAN AGE | 33.0 | 33.7 | 34.9 |
| # OF BUSINESSES | 1,420 | 11,601 | 21,584 |
| DAYTIME POPULATION | 14,862 | 117,853 | 209,277 |



PLAZA MIDWOOD HAS ATTRACTED MANY OF CHARLOTTE'S BEST LOCAL RESTAURANTEURS

FS FOOD GROUP



Calle Sol Latin Café & Cevicheria Plaza Midwood (2021)

LITTLE Mama's SouthPark (2020)

YAFO Kitchen Plaza Midwood (2018), Dilworth (2018), SouthPark (2016)

MIDWOOD SMOKEHOUSE Plaza Midwood (2011), Park Rd Shopping Center (2017)

PACO'S TACOS & TEQUILA SouthPark (2010)

Mama Ricatta's ITALIAN RESTAURANT Midtown (1992)

TONIDANDEL - BROWN RESTAURANT GROUP



EVER ANDALO NoDa (2022)

SUPPERLAND Plaza Midwood (2021)

HABERDISH NoDa (2016)

GROWLERS POURHOUSE NoDa (2010)

1957 HOSPITALITY GROUP



puerta Elizabeth (2023)

Rosemont MARKET & WINE BAR Elizabeth (2023)

Cheat's Plaza Midwood (2022)

THE Crumpleton Elizabeth (2018)

JOE & KATY KINDRED



milkbread Plaza Midwood (2022), Davidson (2022)

HELLO, SAILOR Davidson (2017)

KINDRED Davidson (2015)

AREA MAP



ABOUT THE PROJECT



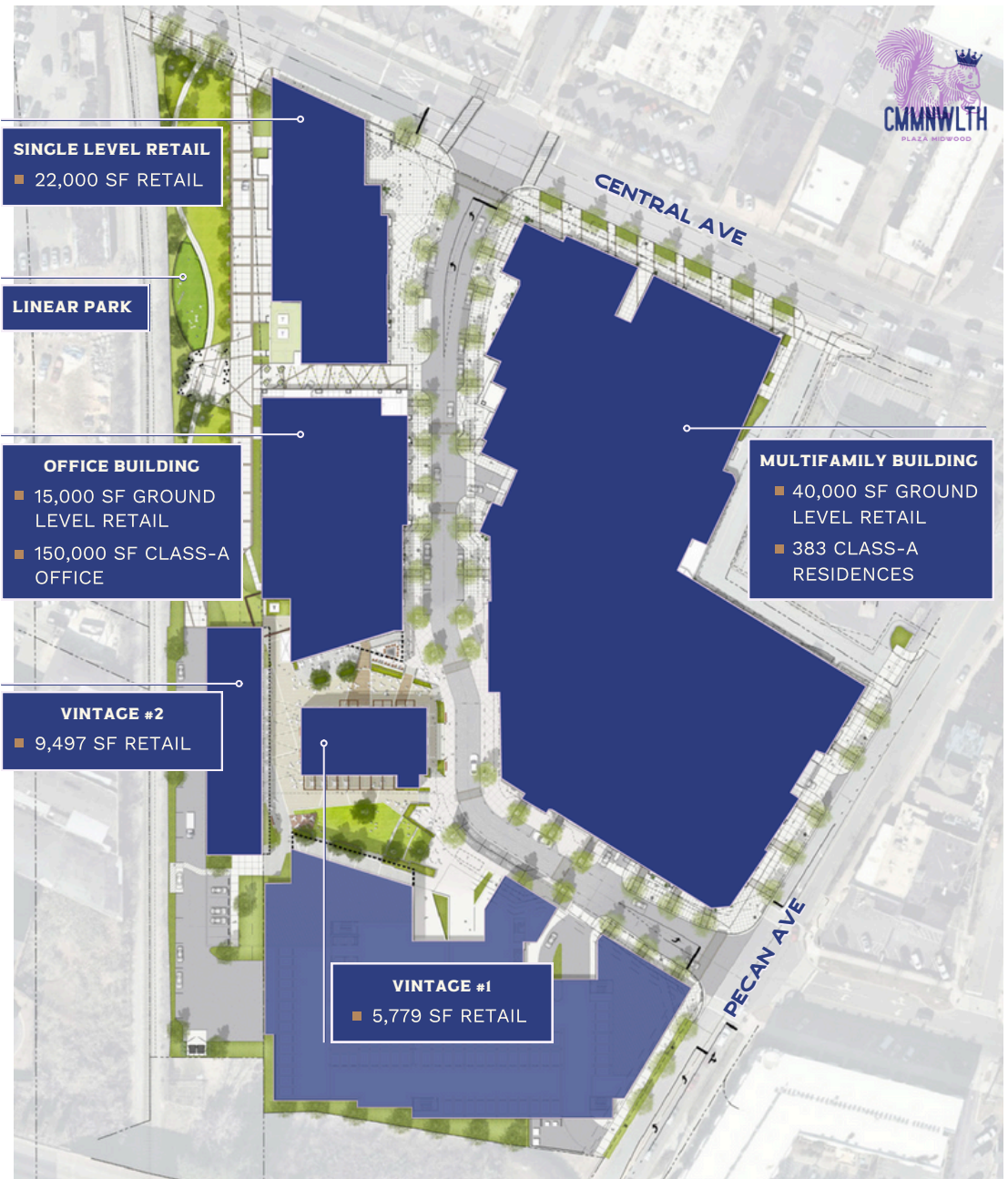
SINGLE LEVEL RETAIL



MULTIFAMILY BUILDING



OFFICE BUILDING



SITE PLAN

GROUND LEVEL RETAIL - MULTIFAMILY BUILDING

| SUITE | USF | PATIO SF |
|-------|-----------------------|----------|
| 1 | 2,675 | - |
| 2 | SWEATHOUZ | |
| 3 | THE SALTY | |
| 4 | 1,546 | - |
| 5 | 3,342 | - |
| 6 | 1,005 | 240 |
| 7 | SOLIDCORE | |
| 8 | 1,095 | - |
| 9 | 1,539 | 641 |
| 10 | VAN LEEUWEN | |
| 11 | 1,373 | - |
| 12-13 | LUCCHESI BOOTS | |
| 14 | 2,347 | 565 |
| 15 | 3,407 | 520 |
| 16 | 1,539 | - |
| 17 | 2,520 | 915 |
| 18-19 | YONDER YOGA | |
| 20 | 2,457 | - |



GROUND LEVEL RETAIL - OFFICE BUILDING

| SUITE | USF | PATIO SF |
|-------|-------|----------|
| A | 4,869 | 1,968 |
| B | 1,688 | - |
| C | 1,541 | 290 |
| D | 2,605 | - |
| E | 2,248 | 539 |

SINGLE LEVEL RETAIL BUILDING

| | | |
|---|------------------|-------|
| F | 3,477 | 1,060 |
| G | 2,059 | - |
| H | ABC STORE | |
| I | FIVE GUYS | |
| J | 5,979 | 1,841 |



PLAZA MIDWOOD
COMMONWEALTH
CHARLOTTE, NC

GET IN TOUCH ▾



CHARLES THRIFT
CHARLES@THRIFTCRES.COM
704.622.1795

LUCY BUTLER
LBUTLER@THRIFTCRES.COM
704.420.3858

PEYTON GEHRON
PEYTON@THRIFTCRES.COM
704.650.0605



nuveen
A TIAA Company

