

PLAZA MIDWOOD
COMMONWEALTH
CHARLOTTE, NC



WATCH THE VIDEO

RETAIL



UPTOWN
CHARLOTTE

VINTAGE #2

VINTAGE #1

OFFICE BUILDING
RETAIL

MULTIFAMILY
RETAIL

SINGLE
LEVEL
RETAIL

MAIN STREET

COMMONWEALTH

TWO PARTS VINTAGE, ONE PART NEXT BIG THING.

12 ACRE
MIXED-USE DEVELOPMENT

100K SF
RETAIL

150K
OFFICE

383
RESIDENCES

AMPLE
GREEN SPACE

LOCATION

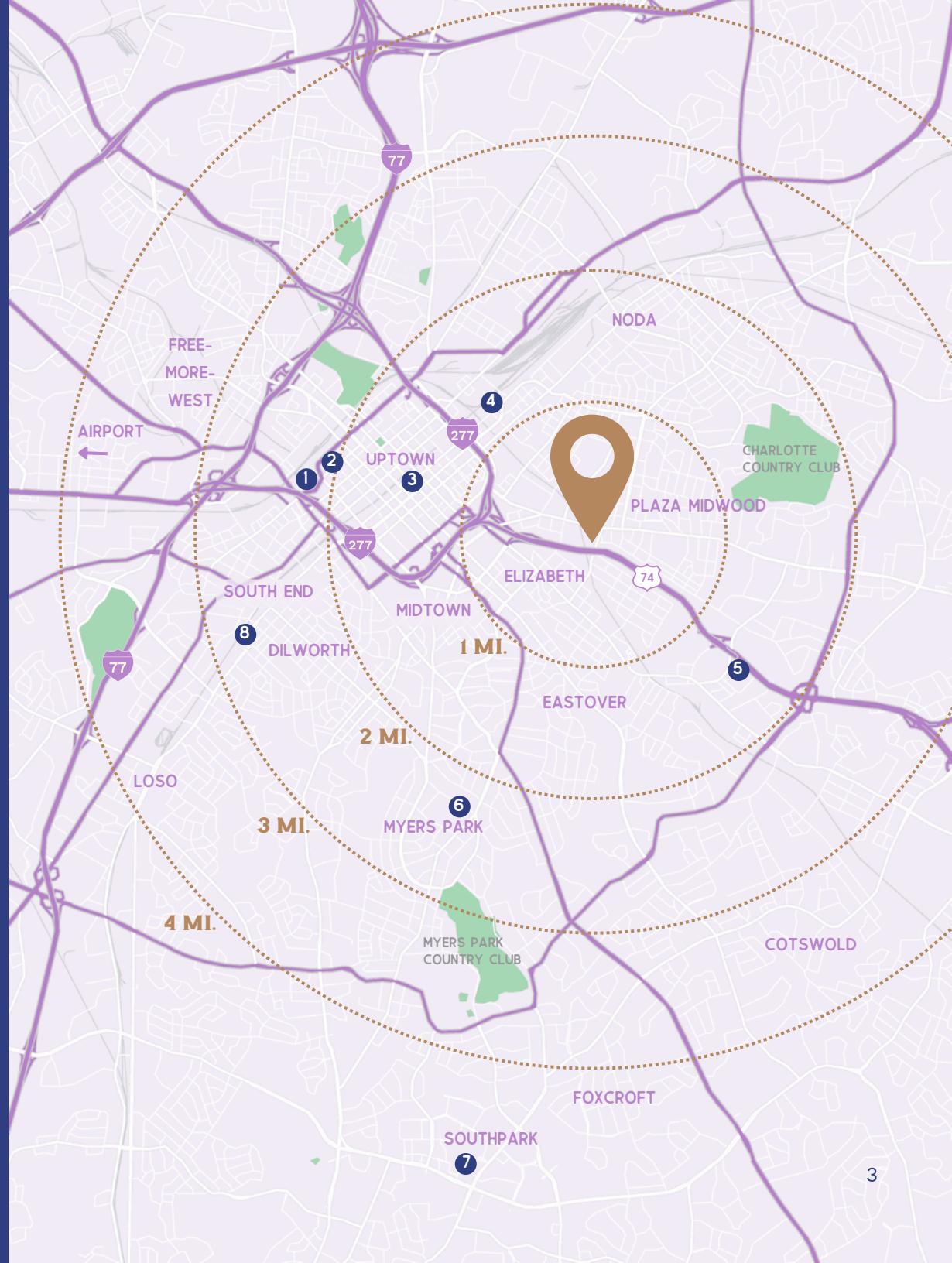
LOCATED JUST 1 MILE TO THE SOUTHEAST OF UPTOWN CHARLOTTE. COMMONWEALTH IS LOCATED IN THE HEART OF THE PLAZA MIDWOOD NEIGHBORHOOD.

CHARLOTTE LANDMARKS

1. BANK OF AMERICA STADIUM
2. TRUIST FIELD
3. SPECTRUM CENTER
4. OPTIMIST HALL
5. BOJANGLES COLISEUM
6. QUEENS UNIVERSITY
7. SOUTHPARK MALL
8. ATHERTON MILL

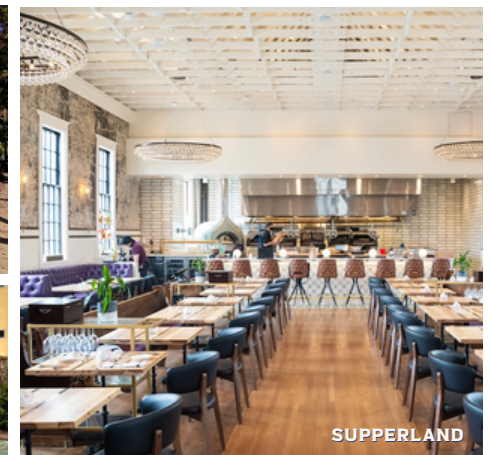
TRAVEL TIMES

ELIZABETH	2 MINUTES
MIDTOWN	4 MINUTES
UPTOWN	5 MINUTES
EASTOVER	6 MINUTES
MYERS PARK	7 MINUTES
DILWORTH	10 MINUTES
SOUTH END	10 MINUTES
COTSWOLD	10 MINUTES
FOXCROFT	14 MINUTES
SOUTHPARK	15 MINUTES
AIRPORT	19 MINUTES



WELCOME TO PLAZA MIDWOOD

- URBAN WALKABLE COMMUNITY
- HOME TO CHARLOTTE'S FIRST SOCIAL DISTRICT
- CHARLOTTE COUNTRY CLUB
2 miles from commonwealth
- DENSE MULTIFAMILY
3,174 units within 1 mile
29,839 units within 3 miles



DEMOGRAPHICS

	1 MILE	3 MILE	5 MILE
EST. POPULATION	17,104	133,079	298,988
EST. HOUSEHOLDS	8,496	65,855	134,263
AVG. HH INCOME	\$145,018	\$142,109	\$126,959
AVG. HH SIZE	2.0	2.0	2.2
MEDIAN HOME VALUE	\$489,624	\$471,074	\$430,057
MEDIAN AGE	33.0	33.7	34.9
# OF BUSINESSES	1,420	11,601	21,584
DAYTIME POPULATION	14,862	117,853	209,277

PLAZA MIDWOOD HAS ATTRACTED MANY OF CHARLOTTE'S BEST LOCAL RESTAURANTEURS

FS FOOD GROUP



- Calle Sol** Latin Café & Cevicheria Plaza Midwood (2021)
- LITTLE Mama's** SouthPark (2020)
- YAFO** Kitchen Plaza Midwood (2018), Dilworth (2018), SouthPark (2016)
- MIDWOOD SMOKEHOUSE** Plaza Midwood (2011), Park Rd Shopping Center (2017)
- ★ PAGO'S TACOS & TEQUILA ★** SouthPark (2010)
- Mama Ricatta's** ITALIAN RESTAURANT Midtown (1992)

TONIDANDEL - BROWN RESTAURANT GROUP



- EVER ANDALO** NoDa (2022)
- SUPPERLAND** Plaza Midwood (2021)
- HABERDISH** NoDa (2016)
- GROWLERS POURHOUSE** NoDa (2010)

1957 HOSPITALITY GROUP



- puerta** Elizabeth (2023)
- Rosemont** MARKET & WINE BAR Elizabeth (2023)
- Cheat's** Plaza Midwood (2022)
- THE Crumpleton** Elizabeth (2018)

JOE & KATY KINDRED

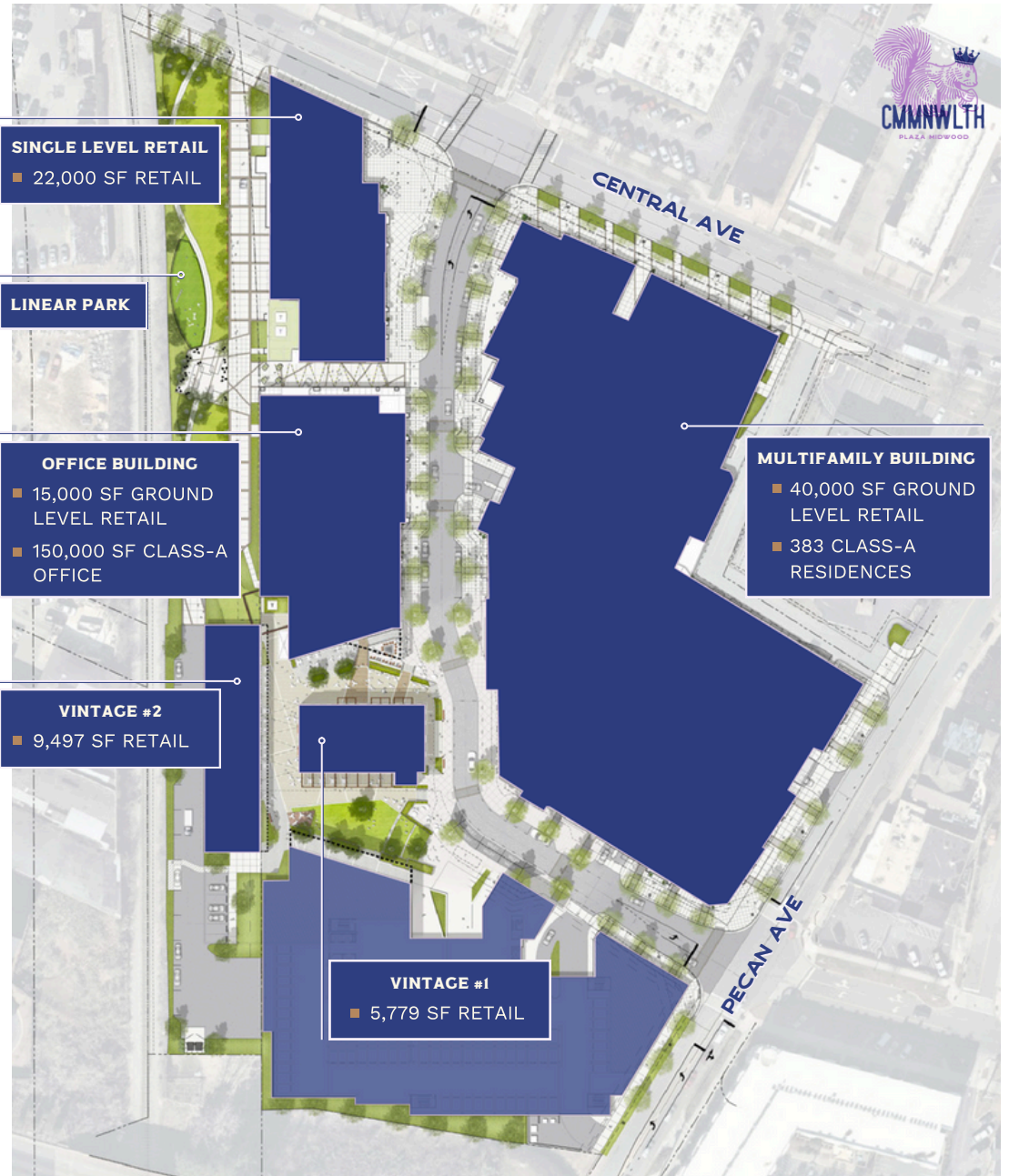


- milkbread** Plaza Midwood (2022), Davidson (2022)
- HELLO, SAILOR** Davidson (2017)
- KINDRED** Davidson (2015)

AREA MAP



ABOUT THE PROJECT



SITE PLAN

GROUND LEVEL RETAIL - MULTIFAMILY BUILDING

SUITE	USF	PATIO SF
1	2,675	-
2	SWEATHOUZ	
3	THE SALTY	
4	1,546	-
5	3,342	-
6	SUGARING LA	
7	SOLIDCORE	
8	1,095	-
9	1,539	641
10	VAN LEEUWEN	
11	1,373	-
12-13	LUCCHESI BOOTS	
14	2,347	565
15	3,407	520
16	1,539	-
17	2,520	915
18-19	YONDER YOGA	
20	2,457	-



GROUND LEVEL RETAIL - OFFICE BUILDING

SUITE	USF	PATIO SF
A	BARTACO	
B	1,688	-
C	1,541	290
D	2,605	-
E	SWEETGREEN	

SINGLE LEVEL RETAIL BUILDING

F	3,477	1,060
G	2,059	-
H	ABC STORE	
I	FIVE GUYS	
J	5,979	1,841



PLAZA MIDWOOD
COMMONWEALTH
CHARLOTTE, NC

GET IN TOUCH ▾



CHARLES THRIFT
CHARLES@THRIFTCRES.COM
704.622.1795

LUCY BUTLER
LBUTLER@THRIFTCRES.COM
704.420.3858

PEYTON GEHRON
PEYTON@THRIFTCRES.COM
704.650.0605



nuveen
A TIAA Company

