

PROPERTY DETAILS ▾



1414-1422 S. Tryon St
Charlotte, NC 28203



1,206 SF
Available retail



Walkable Location
Less than 400 ft from the
Bland St light rail station



Signage Opportunity
Visible on busy S. Tryon St



Parking
920 Space parking deck



Lyft and Uber
Drop off lane



Valet Services

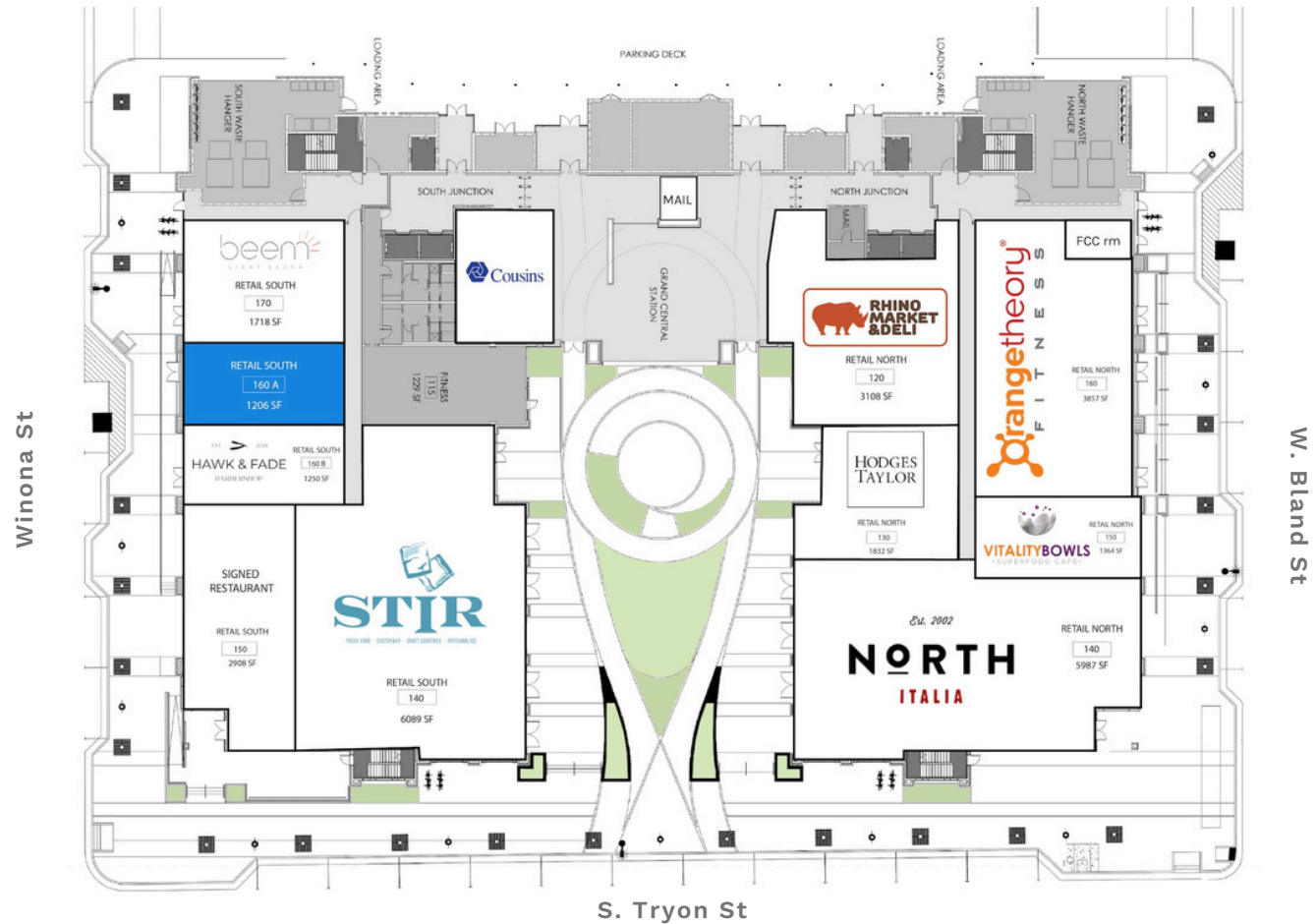


Desirable Co-Tenancy
North Italia, Stir, Rhino
Market & Deli, Orange
Theory, and more

THE
RAILYARD
SOUTHEND

Ground Level Retail

Available



Retail South | Suite 160A

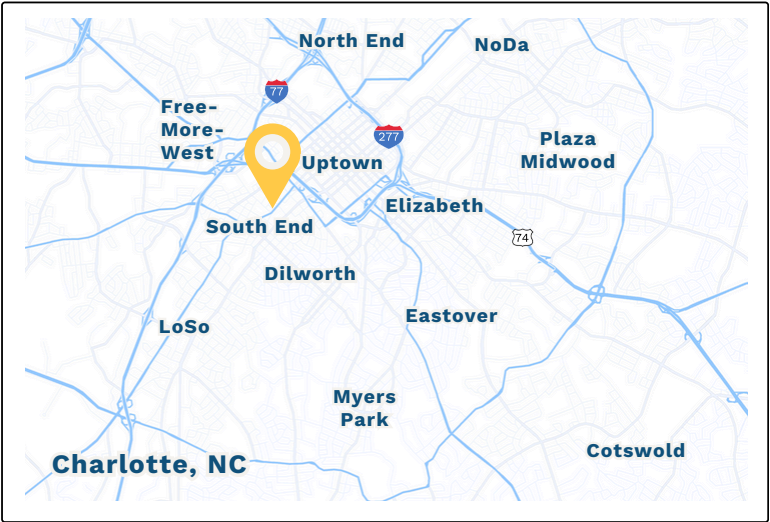
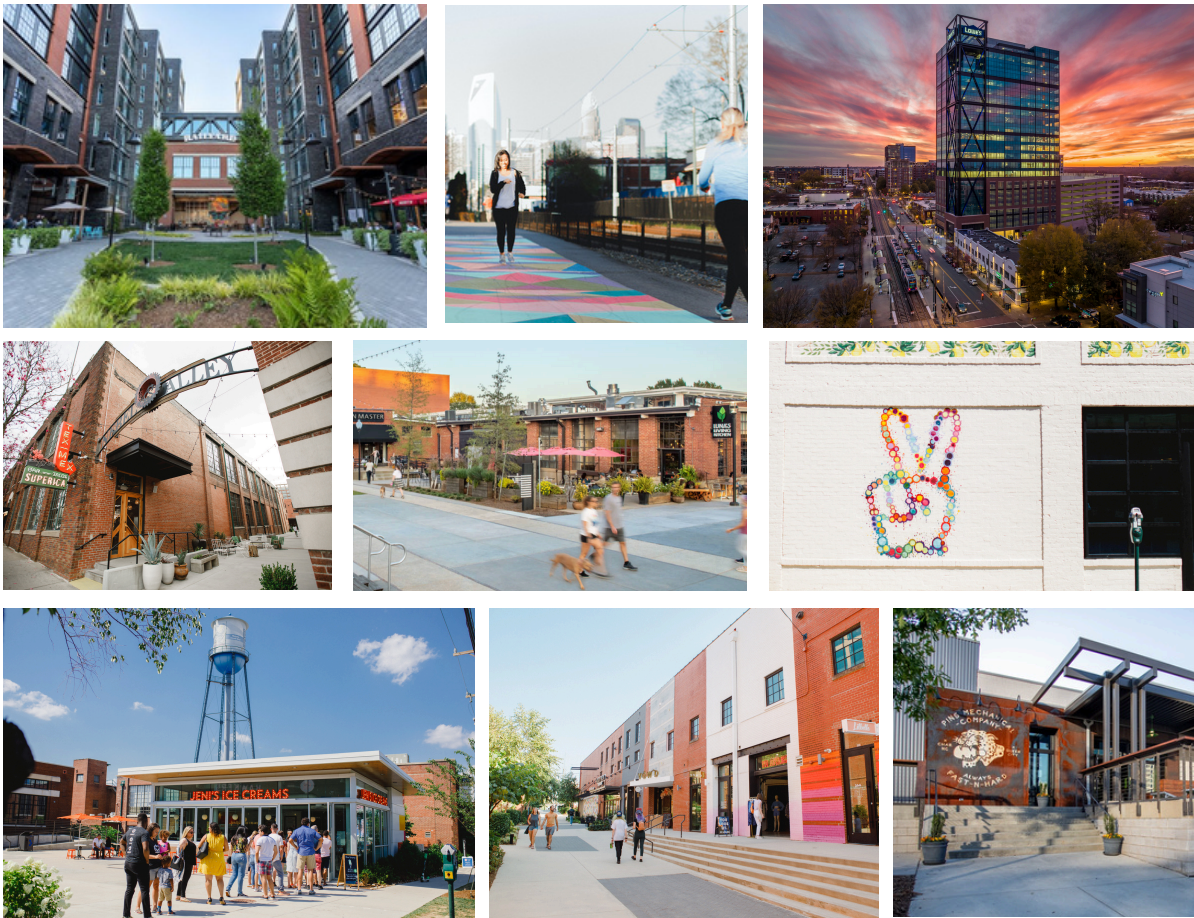
- 1,206 SF
- Cold Dark Shell
- Available now

South End

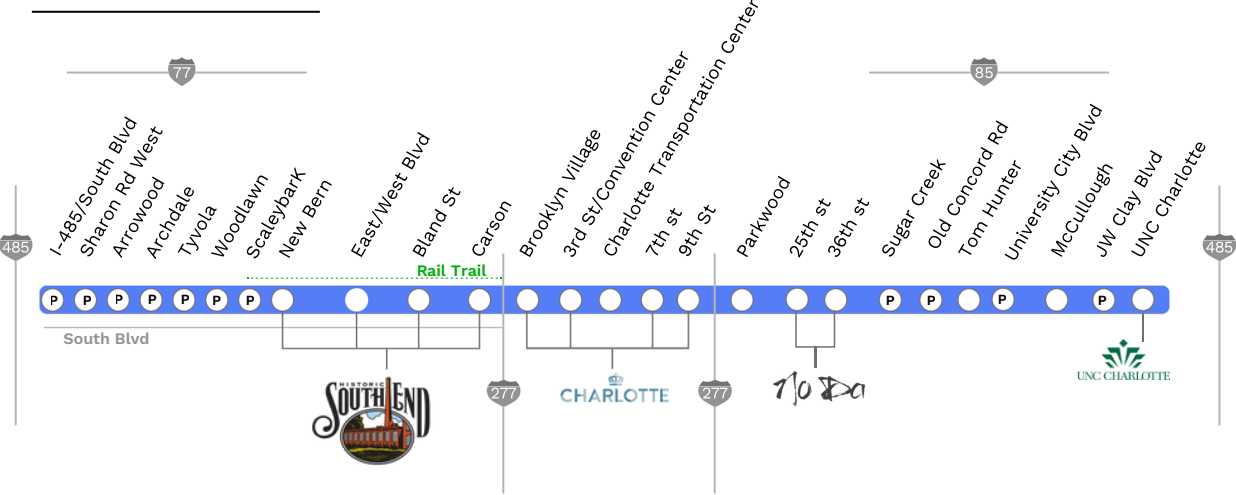
CHARLOTTE, NC

The **RailYard** is located in the bustling South End neighborhood. South End is located **immediately south of Uptown Charlotte** and is well-served by the **Blue Line** light rail with four stations at the heart of the neighborhood. Initially an industrial zone trafficked by multiple freight lines and populated with textile factories and other warehouses, today South End is a **dynamic urban neighborhood** with a mix of rehabbed historic structures and new transit-oriented development.

From countless culinary experiences to homegrown breweries and coffee shops, fine art galleries to **diverse retail experiences**, there are so many ways to experience the neighborhood.



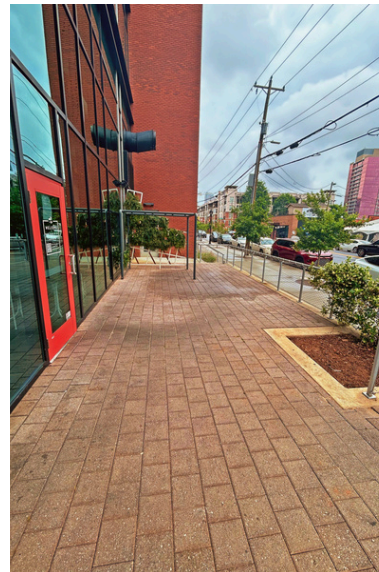
The Blue Line





The RailYard

1414 S. Tryon St | Charlotte, NC 28203



GET IN TOUCH ▾



Cliff Benson

cliff@thriftcres.com

(704) 989-5476