

1401 CENTRAL AVE



OFFICE FOR LEASE ▾

1401 Central Ave.

Charlotte, NC




1401 Central Ave.

Located in the heart of Plaza Midwood, 1401 Central Avenue offers move-in-ready spec suites for lease, all including private office spaces. Just minutes from Uptown and surrounded by a blend of historic charm and modern energy, the property is ideally positioned along Central Avenue—one of the city’s most active corridors.

1401 Central Avenue is surrounded by an abundance of walkable amenities, including popular restaurants, coffee shops, breweries, fitness studios, and retail. With easy access to the surrounding neighborhoods, the property is ideally suited for businesses seeking modern office space in a thriving, amenity-rich location.

Current Retail Availability:

 1401 Central Ave. Charlotte, NC 28205

Space Available	967-2,676 SF
Delivery Condition	Spec Suites
Target Use	Office
Site Features	<ul style="list-style-type: none">• Surface Parking• Building Signage Opportunity• Easy Access from I-74 & I-277• 40+ Bars & Restaurants within 0.5 Miles



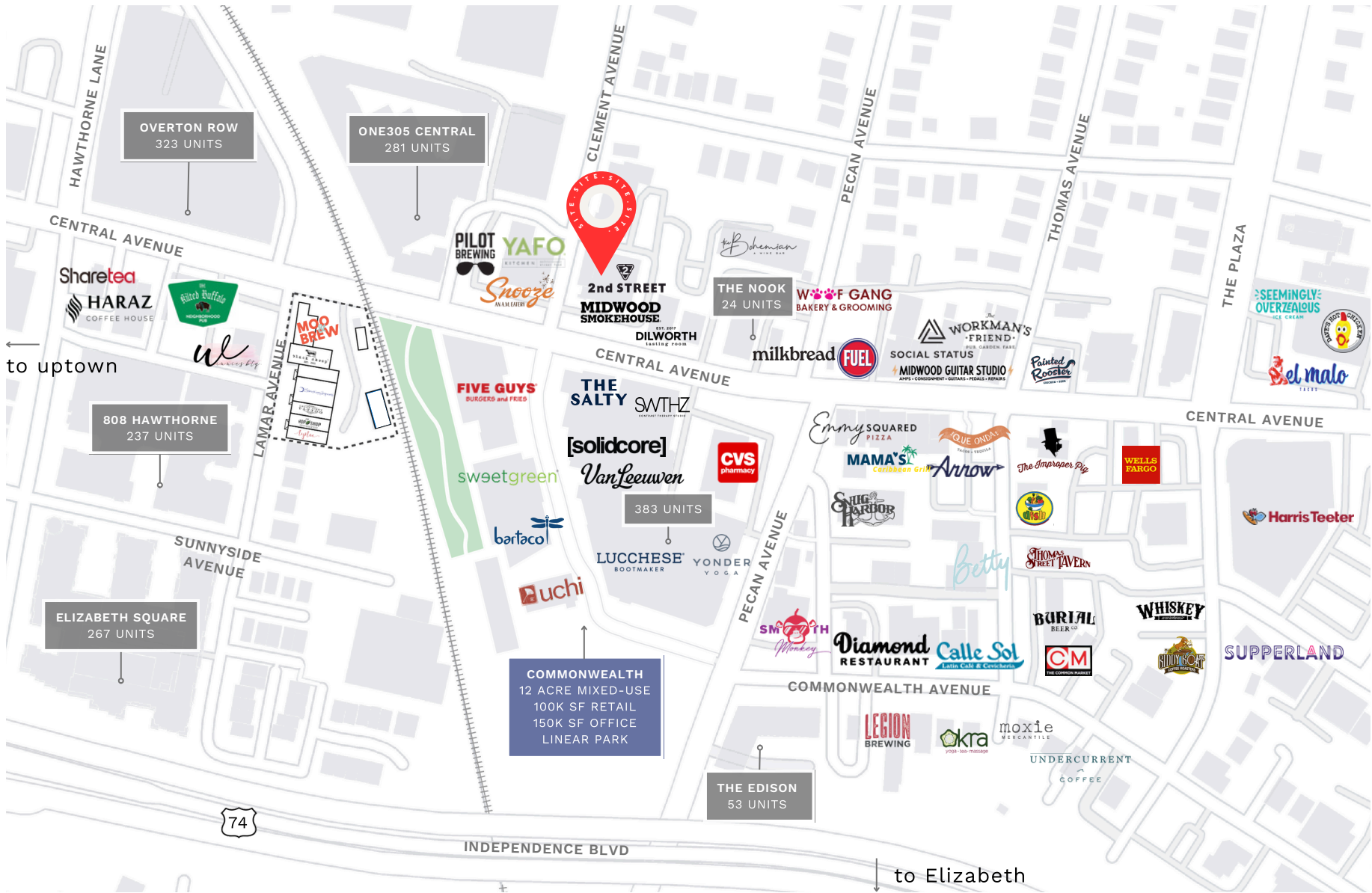


PROPERTY DETAILS

LOCATION

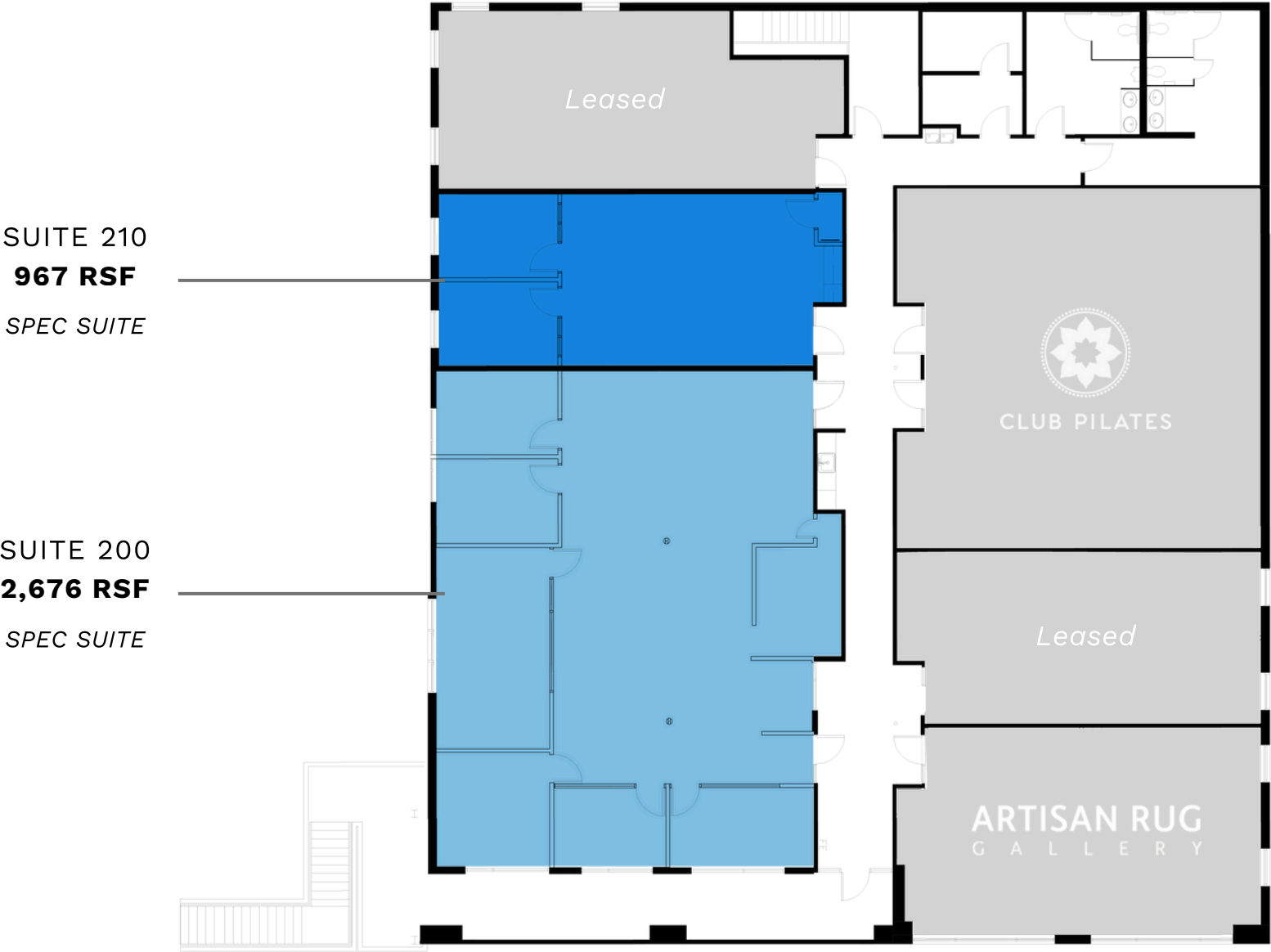
FLOOR PLAN

CONTACT





2nd Floor





1401 CENTRAL AVE. | CHARLOTTE, NC



PROPERTY DETAILS

LOCATION

FLOOR PLAN

CONTACT

CHARTWELL PROPERTY GROUP

GET IN TOUCH ▾



Stephen Woodard

stephen@thriftcres.com
(704) 905-4309

Alex Mann

alex@thriftcres.com
(703) 623-7002