

OVERVIEW

Discover the ideal blend of vibrancy and historic charm at 1801 E. 7th St, a mixed-use development. Positioned between Eastover and Plaza Midwood, this location offers easy access to Uptown, major thoroughfares, and the surrounding neighborhoods. The development will feature 161 residential units, dedicated amenity space, and a parking garage, providing built-in foot traffic and convenience for retail tenants. Retail spaces on the front corners of the building provide high visibility on E. 7th St for tenants and direct access with ample parking on cross streets.

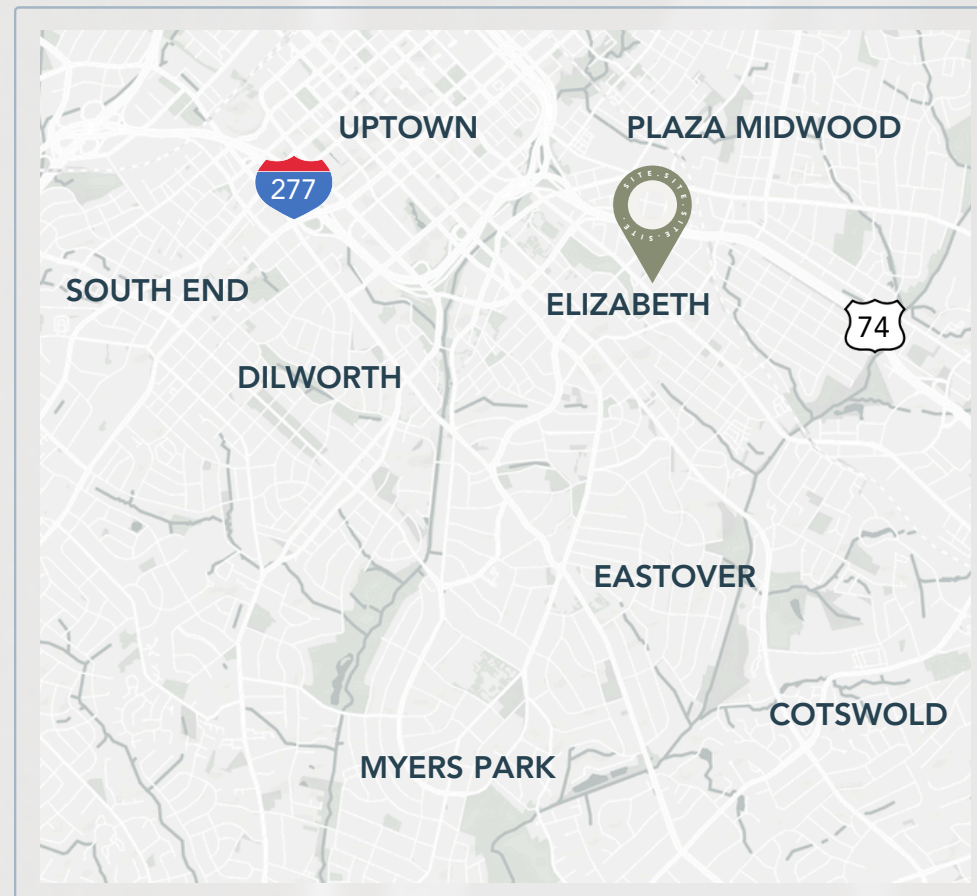


LOCATION

ELIZABETH

Elizabeth is one of Charlotte's most sought-after neighborhoods, offering an unmatched location that blends charm with connectivity. Its tree-lined streets sit just minutes from Uptown and offer convenient access to I-277 and I-74, making it easy to navigate the city.

Anchored by Independence Park, the neighborhood continues to grow around some of the city's favorite restaurants and retailers, all bringing walkable options to the neighborhood.



1801 E. 7TH ST | CHARLOTTE, NC





PROPERTY DETAILS :

 1801 E. 7TH ST CHARLOTTE, NC 28204

AVAILABILITY 1,396 SF & 2,611 SF

DELIVERY CONDITION First Generation Retail

DELIVERY Summer 2027

SITE FEATURES

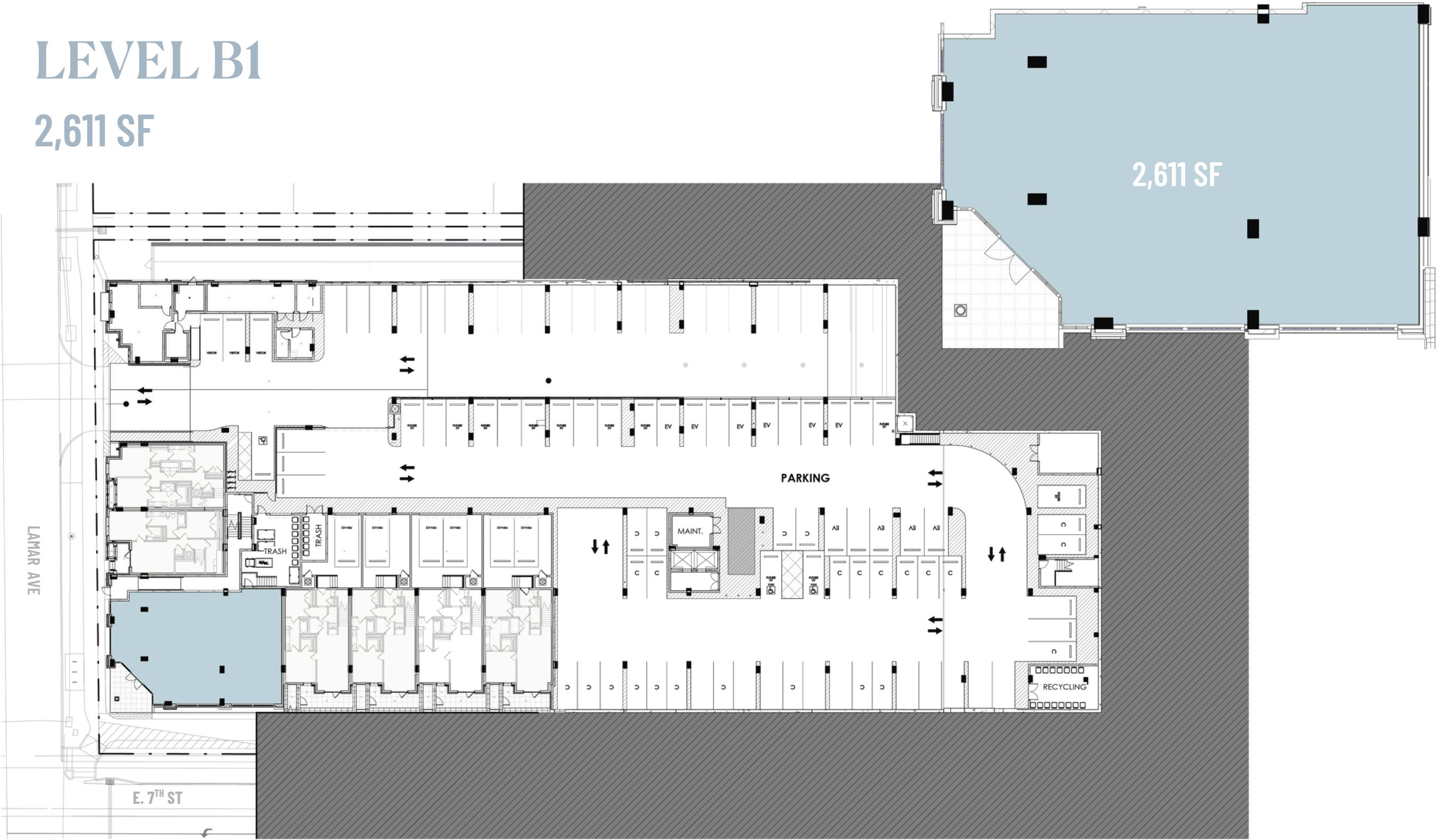
- Frontage on E. 7th Street
- On-site parking deck
- Ample street parking

1801 E. 7TH ST | CHARLOTTE, NC

AVAILABILITY

LEVEL B1

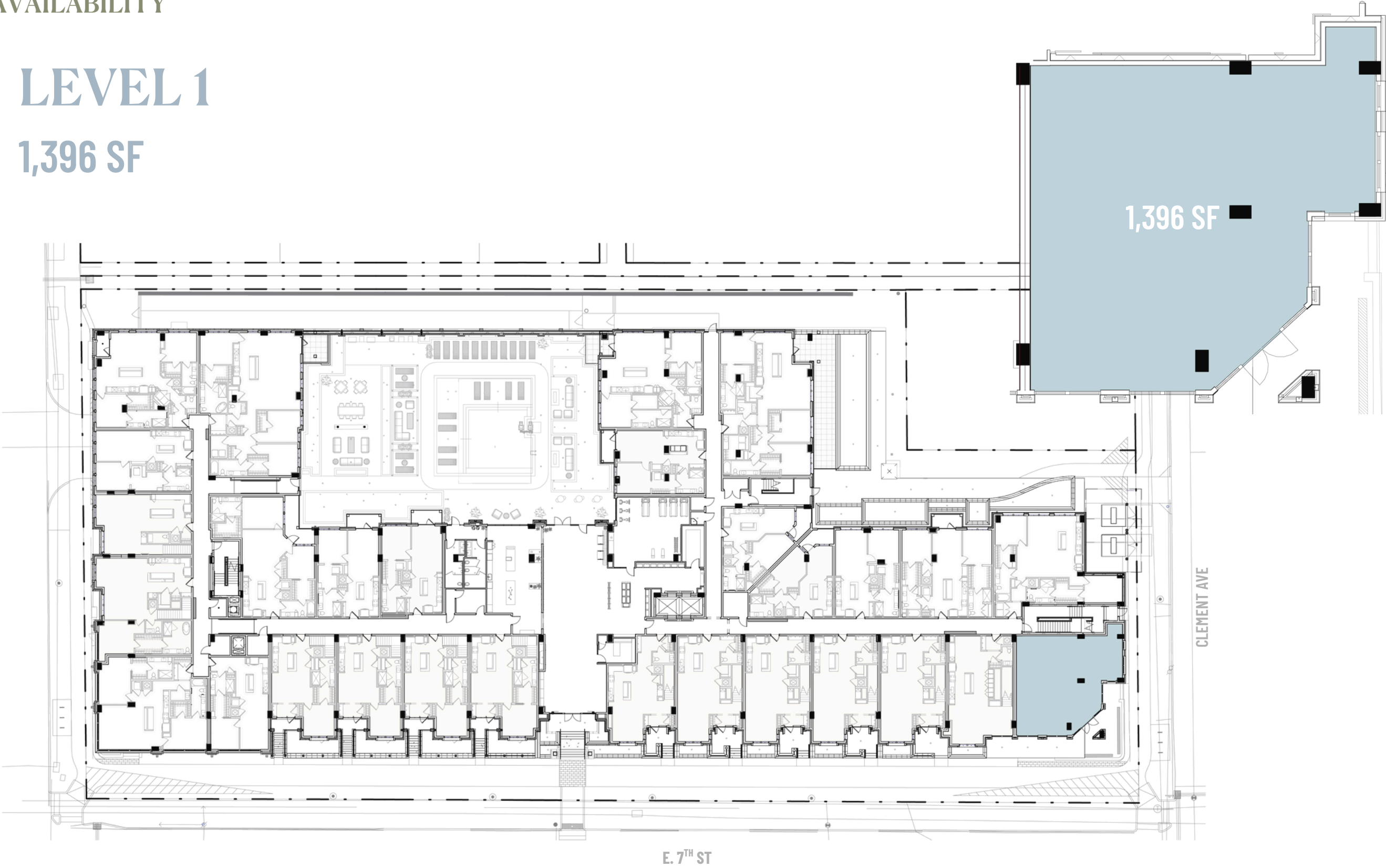
2,611 SF



AVAILABILITY

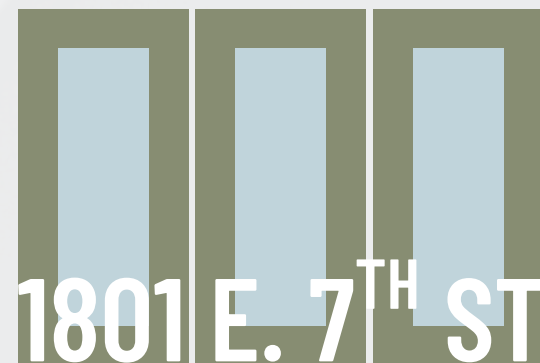
LEVEL 1

1,396 SF





1801 E. 7TH ST | CHARLOTTE, NC



LEASING:



Charles Thrift

charles@thriftcres.com
(704) 622-1795

DEVELOPMENT:

