



RETAIL FOR LEASE ▾

  
**WAVERLY**

Charlotte, NC



## ABOUT THE PROPERTY ▾



Waverly is a premier mixed-use community in South Charlotte that combines upscale retail, dining, office, and residential space in a walkable, vibrant setting. Anchored by Whole Foods Market and surrounded by a thoughtfully curated mix of national and local retailers, Waverly attracts a steady flow of residents, professionals, and visitors. With high visibility along Providence Road and easy access to I-485, the center offers an exceptional opportunity for retailers to thrive in one of Charlotte's most desirable suburban corridors.

### Current Retail Availability:

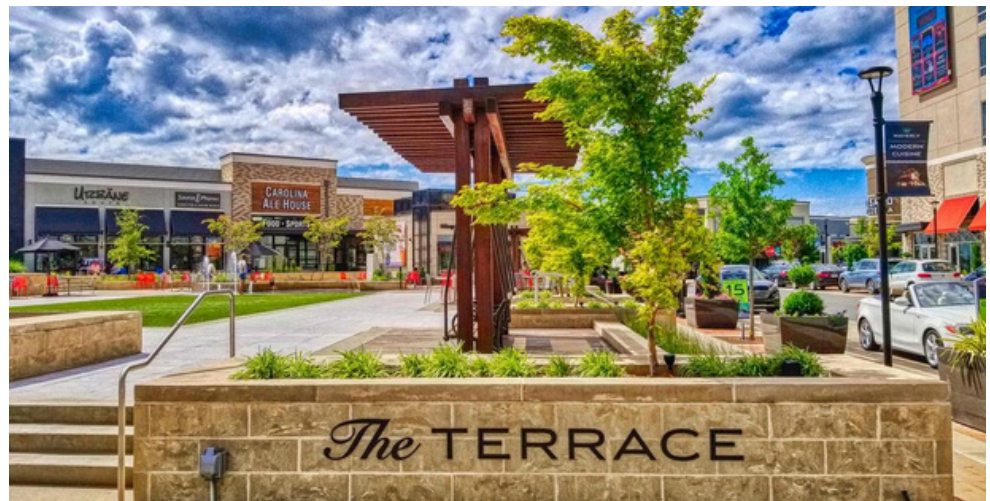
 Providence Rd & Ardrey Kell Rd, Charlotte, NC 28277

---

<b>Suite E-4</b>	2,456 SF 2nd Generation Retail
------------------	-----------------------------------

---

- Property Features**
- 90-Acre Mixed-Use Development
  - 210,000 SF Retail
  - 304,000 SF Office
  - 141-Room Hotel
  - 463 Apartment and Townhome Units
  - 70 Single Family Homes
  - Surface Parking



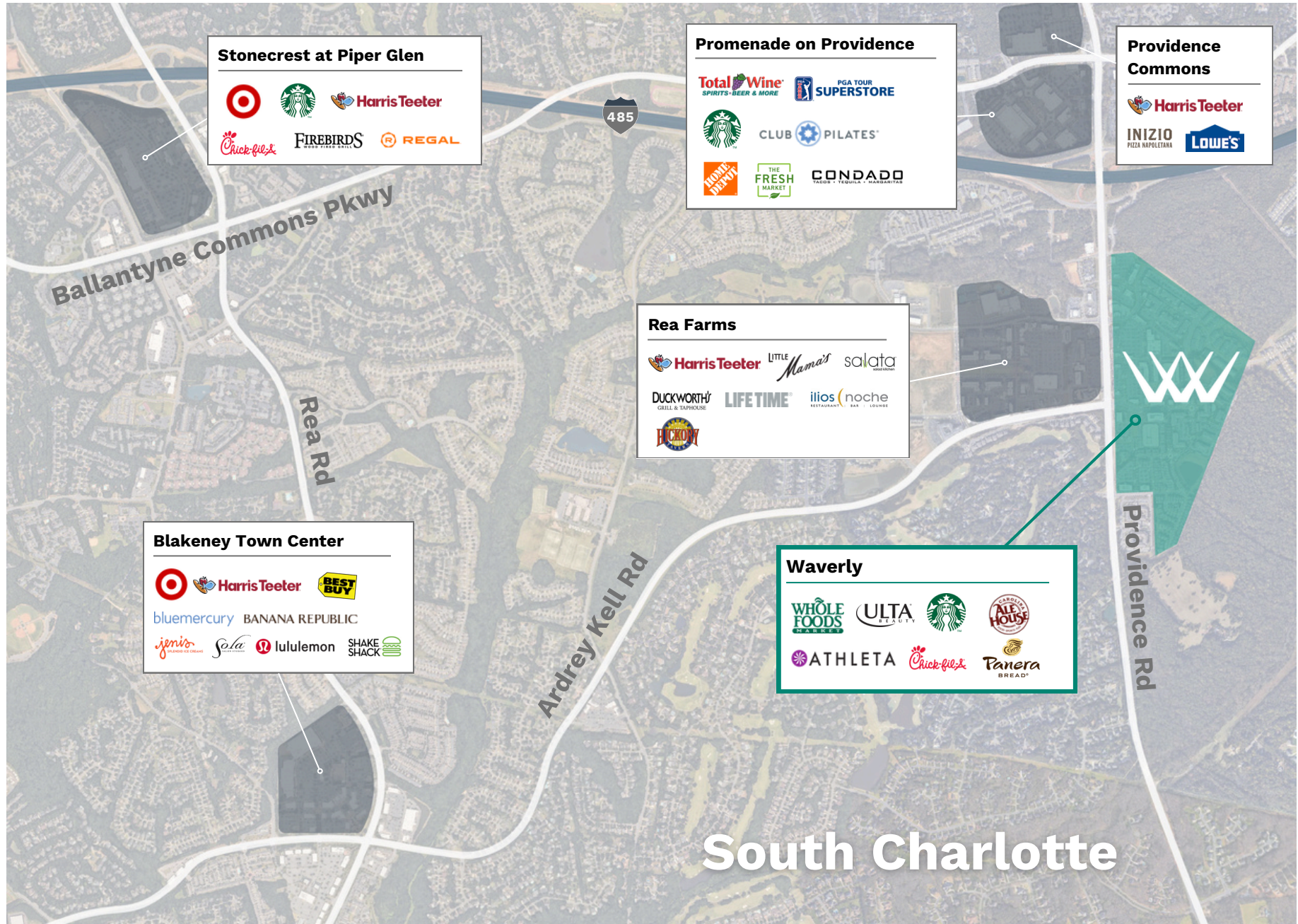
PROPERTY DETAILS

LOCATION

SITE MAP

RETAIL PLAN

CONTACT



**Stonecrest at Piper Glen**

- Target
- Starbucks
- Harris Teeter
- Chick-fil-e
- FIREBIRDS
- REGAL

**Promenade on Providence**

- Total Wine
- PGA TOUR SUPERSTORE
- Starbucks
- CLUB PILATES
- HOME DEPOT
- THE FRESH MARKET
- CONDADO

**Providence Commons**

- Harris Teeter
- INIZIO PIZZA NAPOLETANA
- LOWE'S

**Rea Farms**

- Harris Teeter
- LITTLE Mama's
- salata
- DUCKWORTH'S GRILL & TAVERN
- LIFETIME
- ilios (noche)
- HICKORY

**Blakeney Town Center**

- Target
- Harris Teeter
- BEST BUY
- bluemercury
- BANANA REPUBLIC
- jenis
- Sola
- lululemon
- SHAKE SHACK

**Waverly**

- WHOLE FOODS MARKET
- ULTA
- Starbucks
- ARCADE ALE HOUSE
- ATHLETA
- Chick-fil-e
- Panera BREAD

# South Charlotte



- RETAIL + RESTAURANTS
- APARTMENTS
- OFFICE
- HOTEL
- HOMES/TOWNHOMES
- MEDICAL OFFICE






RETAIL + RESTAURANTS
  AVAILABLE RETAIL
  HOTEL

SUITE	TENANT	SPACE SIZE (SF)
A-1	Truliant	2,097
A-2	Bagel Boys	938
A-3	Polished Nail Bar	2,500
A-4	Organic Bronze Bar	1,202
A-5	Taziki's	2,819
B-1	Firehouse Subs	2,000
B-2	Fleet Feet	1,500
B-3	PlantHouse	1,420
JR ANCHOR	Ulta Beauty	10,919
ANCHOR	Whole Foods	39,877
C-1	Wells Fargo	2,814
D-1	Chipotle	2,300
E-1	Good Feet	2,335
E-1B	Invigory	1,684
E-2	Athleta	3,469
E-3	Warby Parker	1,793
<b>E-4</b>	<b>Available</b>	<b>2,456</b>
E-5	Mainstream Boutique	1,392
E-6	Fab'rik	1,469
E-7	Ovme	1,943
E-8	Chuy's	7,149
F1-1	Hollywood Feed	4,900
F1-2	CorePower Yoga	3,246
F1-3	Scout & Molly's Boutique	1,436
F1-4	Ivy & Leo	1,500
F1-5	Hand & Stone	2,488
F1-6	Modern Salon	2,500
F1-7	DeSano Pizzeria Napoletana	6,040
F2-A	Small Hands Big Art	2,389
<b>F2-B</b>	<b>At Lease</b>	<b>980</b>
F2-2	Corcoran HM Properties	2,651
F2-3	RockBox Fitness	2,150
G-1	The Porter's House	6,200
H-1A	Foxcroft Wine Co	3,997
H-1B	V's Barber Shop	1,005
H-2	Via Roma	2,473
H-3	Cafe Moka	1,358
H-4	Co	3,180
I-1	Carolina Ale House	6,500
I-2A	Teddy & Lu	1,009
I-2B	Urbane South	2,624
I-3	Ted's Montana Grill	5,061
J-1	Haagen Dazs	1,200
K-1	Viva Chicken	3,600
K-2	Yama Asian Fusion	3,400



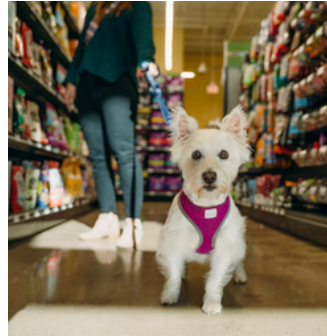
PROPERTY DETAILS

LOCATION

SITE MAP

RETAIL PLAN

CONTACT



PROPERTY DETAILS

LOCATION

SITE MAP

RETAIL PLAN

CONTACT

GET IN TOUCH ▾



**Lucy Butler**

LButler@ThriftCRES.com  
704-420-3858

**Peyton Gehron**

Peyton@ThriftCRES.com  
704-650-0605

