



RETAIL FOR LEASE ▾

**904 Pecan Ave**


Charlotte, NC 28205





ABOUT THE PROPERTY ▾

904 Pecan Avenue offers 1,100 SF of ground-floor retail in a two-story freestanding building, shared with Forest Kitchen Design and the Thrift office. Nestled in a boutique retail pocket between 7th Street and Central Avenue, the property sits at the edge of the Elizabeth neighborhood—one of Charlotte’s most desirable communities. Walkable to the new Commonwealth development, home to destination retailers like Uchi, Lucchese Boots, Sweetgreen, and Bartaco, this location offers excellent visibility and access to strong demographics. Previously a smoothie bar and healthy meal service, the space is ideal for a range of retail or service uses looking to tap into the energy of Plaza Midwood and Elizabeth.

 904 Pecan Avenue, Charlotte, NC 28205

Space Available	1,141 SF
Neighborhood	Plaza Midwood/Elizabeth
Delivery Condition	2nd Generation Retail
Target Use	Retail/Services

- Site Features
- Endcap space
  - High visibility
  - Surface parking
  - Access to strong demographics



PROPERTY DETAILS

LOCATION

SITE PLAN

FLOOR PLAN

CONTACT







PROPERTY DETAILS

LOCATION

SITE PLAN

FLOOR PLAN

CONTACT



thirty one  
jane



True  
REST Float Spa



SHINESALON



Cheestek Porter  
**Cheat's**  
It's Just Not Fair



NECTAR  
BOUTIQUE FLOREST | WEDDINGS & EVENTS



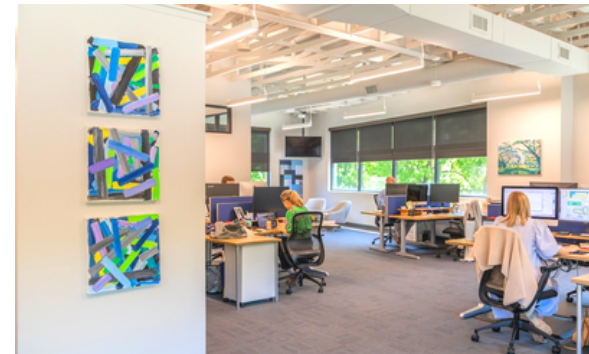
VILLANI'S  
BAKERY



RICO'S AÇAÍ



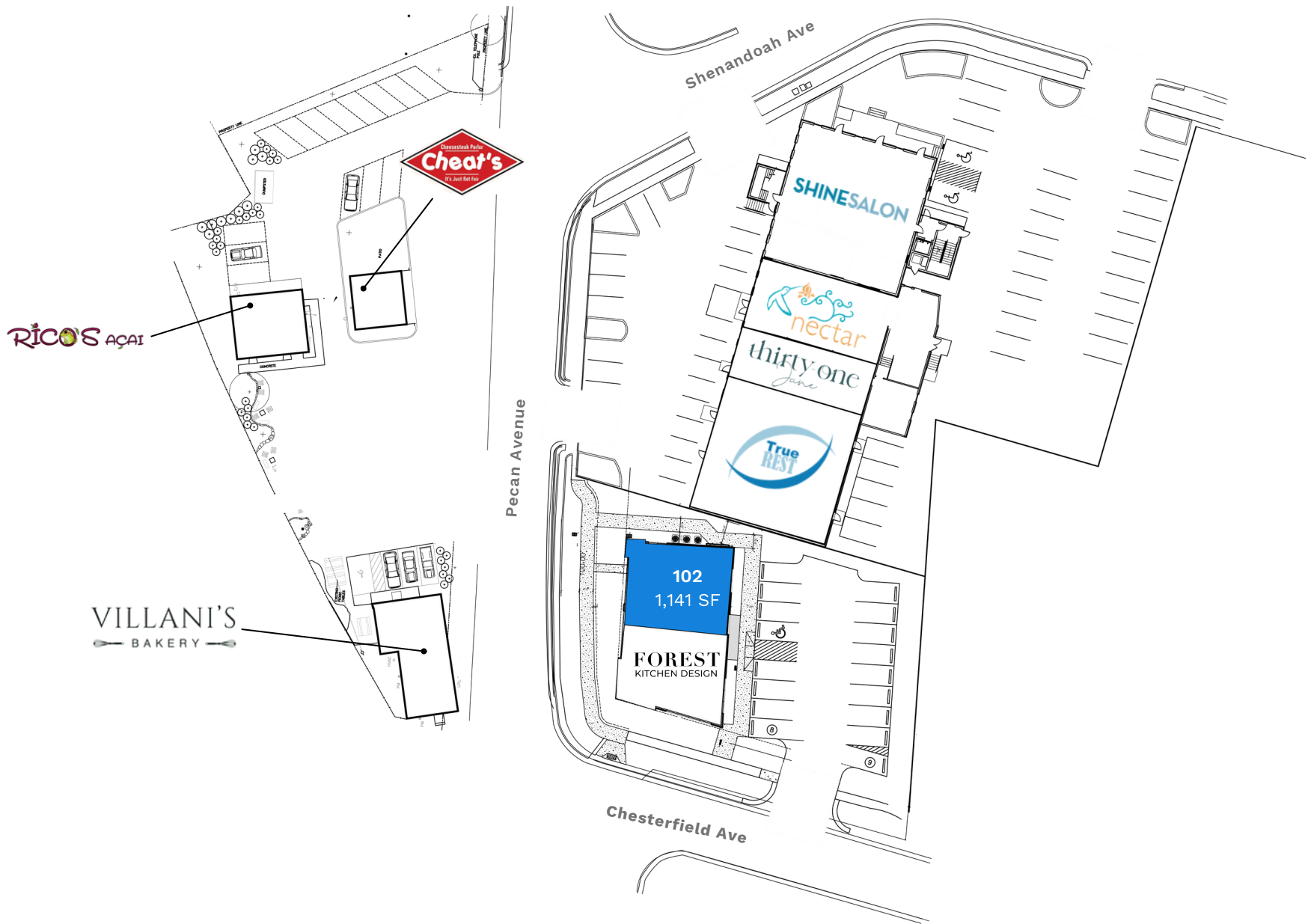
FOREST  
KITCHEN DESIGN



THRIFT  
COMMERCIAL REAL ESTATE SERVICES

904 PECAN AVENUE | CHARLOTTE, NC













PROPERTY DETAILS

LOCATION

SITE PLAN

FLOOR PLAN

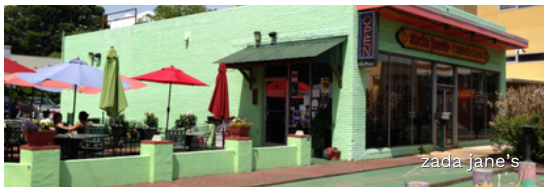
CONTACT



CENTRAL AVE



CALLE SOL



zada jane's



Supperland

GET IN TOUCH ▾



**Jay Mitchener**

Jay@ThriftCRES.com

704-576-2772