



RETAIL FOR LEASE ▾

## 300 E. 36th Street

Charlotte, NC 28206





**300 E. 36th St**  
Charlotte, NC 28206



**NoDa**  
Neighborhood



**6,791 SF**  
Available



**Street level retail**  
294-unit apartment building



**Steps from 36th Street**  
Light Rail Station



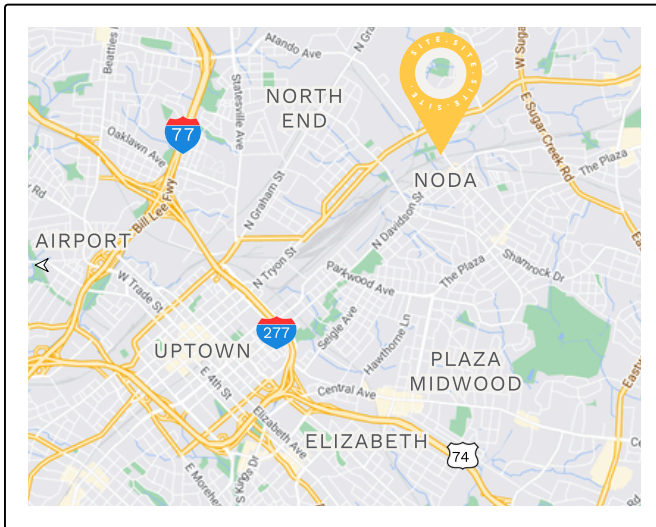
**Double height ceilings**



**Planned Q3 2024 delivery**



**Patio opportunity + vented**  
for restaurant use



JULY 6, 2024



PROPERTY DETAILS

CONSTRUCTION UPDATE

AREA MAP

SITE PLAN

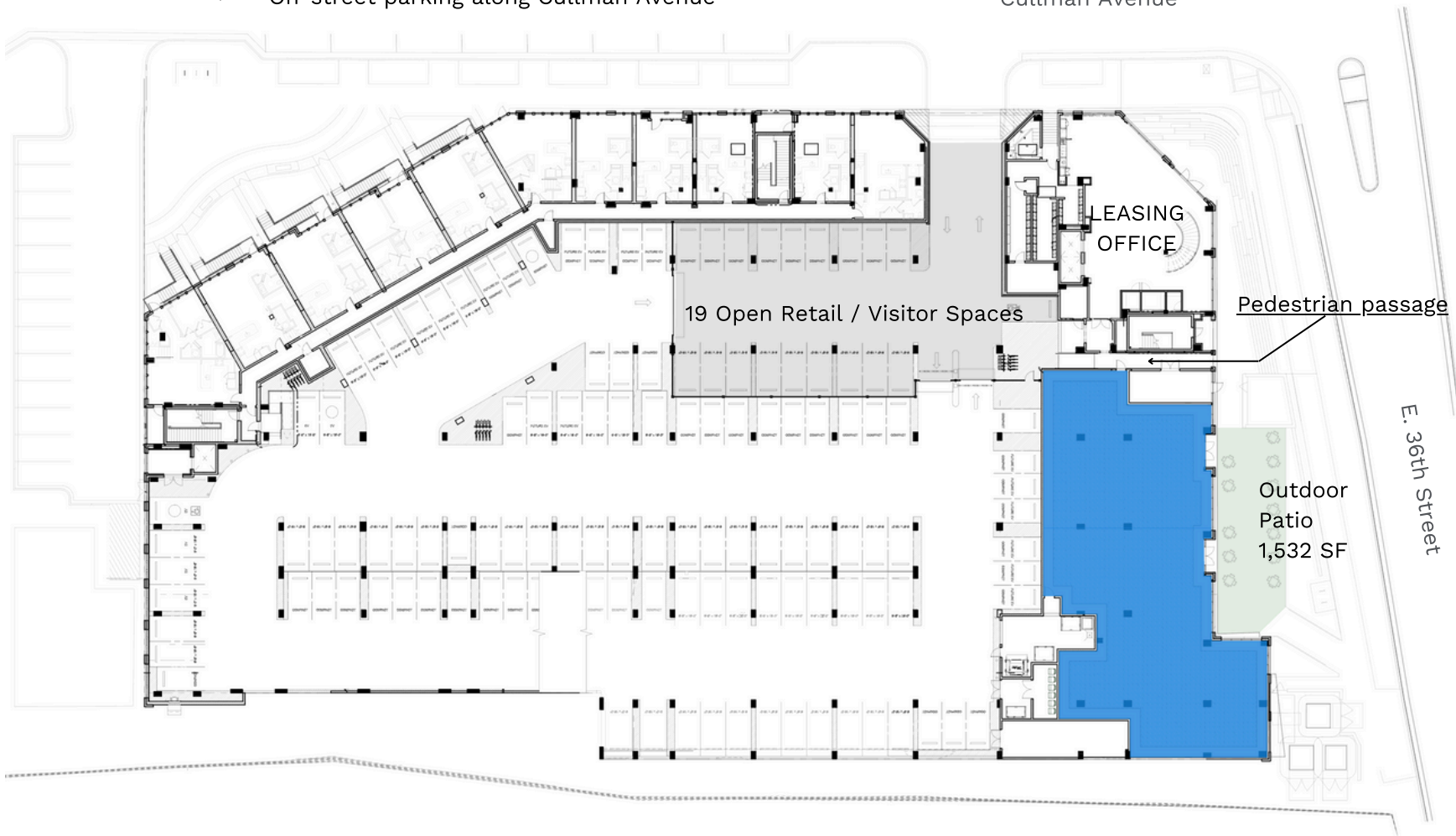
LEASING CONTACT



● GROUND LEVEL RETAIL

← On-street parking along Cullman Avenue

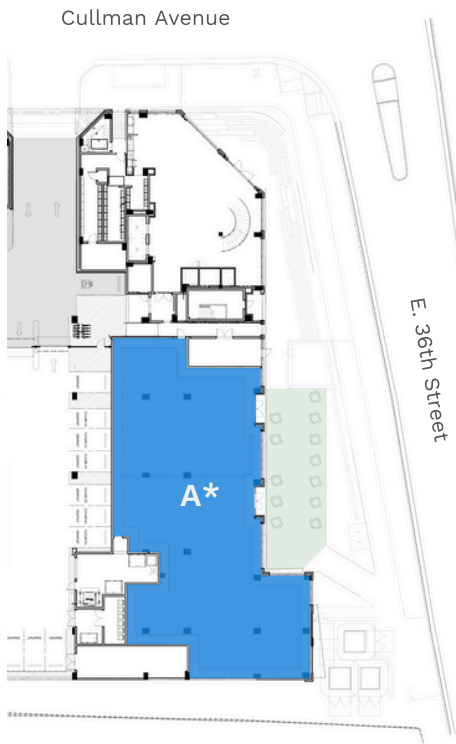
Cullman Avenue



# DEMISING OPTIONS ▾

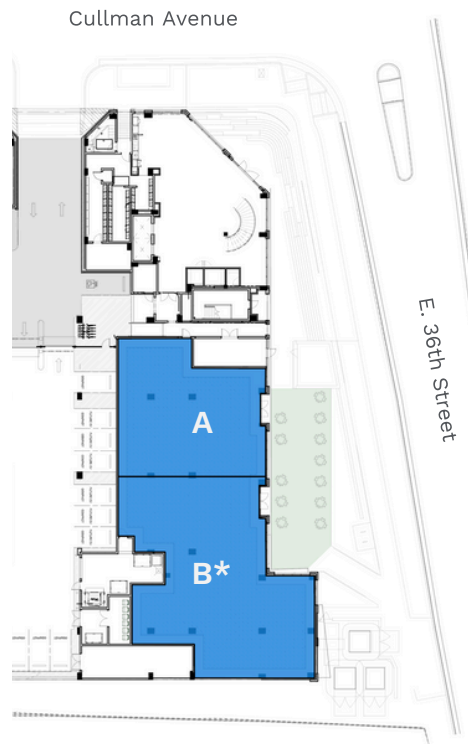
## ● GROUND LEVEL RETAIL

\*vented for restaurant use



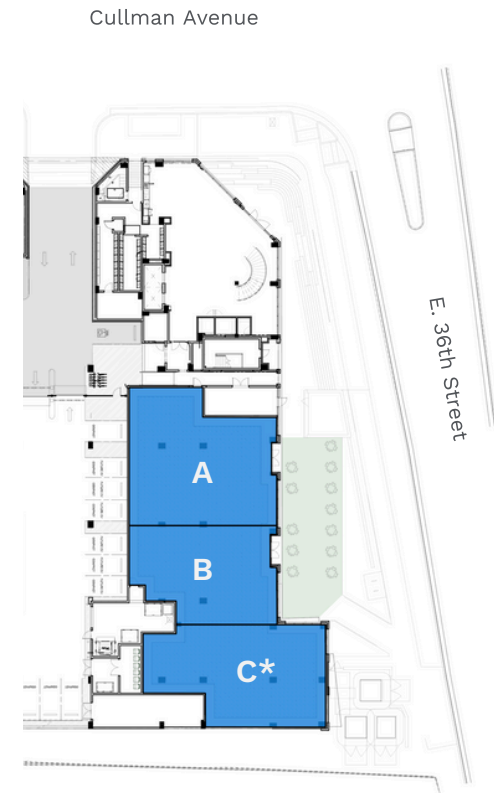
### Single Tenant

Suite A: 6,791 SF\*



### Two-Tenant

Suite A: 2,642 SF  
Suite B: 4,149 SF\*



### Three-Tenant

Suite A: 2,642 SF  
Suite B: 1,839 SF  
Suite C: 2,310 SF\*





# 300 E. 36th Street

Charlotte, NC 28206



**Thompson Brock**

Thompson@ThriftCRES.com

704-661-8576



PROPERTY DETAILS

CONSTRUCTION UPDATE

AREA MAP

SITE PLAN

LEASING CONTACT