



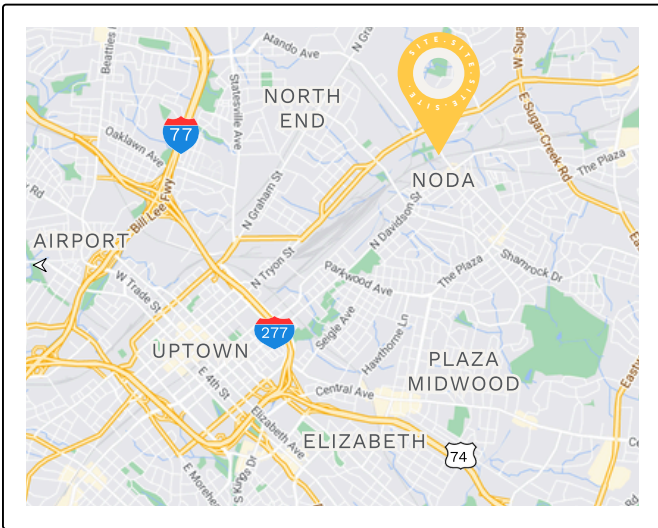
RETAIL FOR LEASE ▾

## 300 E. 36th Street

Charlotte, NC 28206



- 300 E. 36th St**  
Charlotte, NC 28206
- NoDa**  
Neighborhood
- 6,791 SF**  
Available
- Street level retail**  
294-unit apartment building
- Steps from 36th Street**  
Light Rail Station
- Double height ceilings**
- Retail shell available now**
- Patio opportunity + vented**  
for restaurant use



October 2024

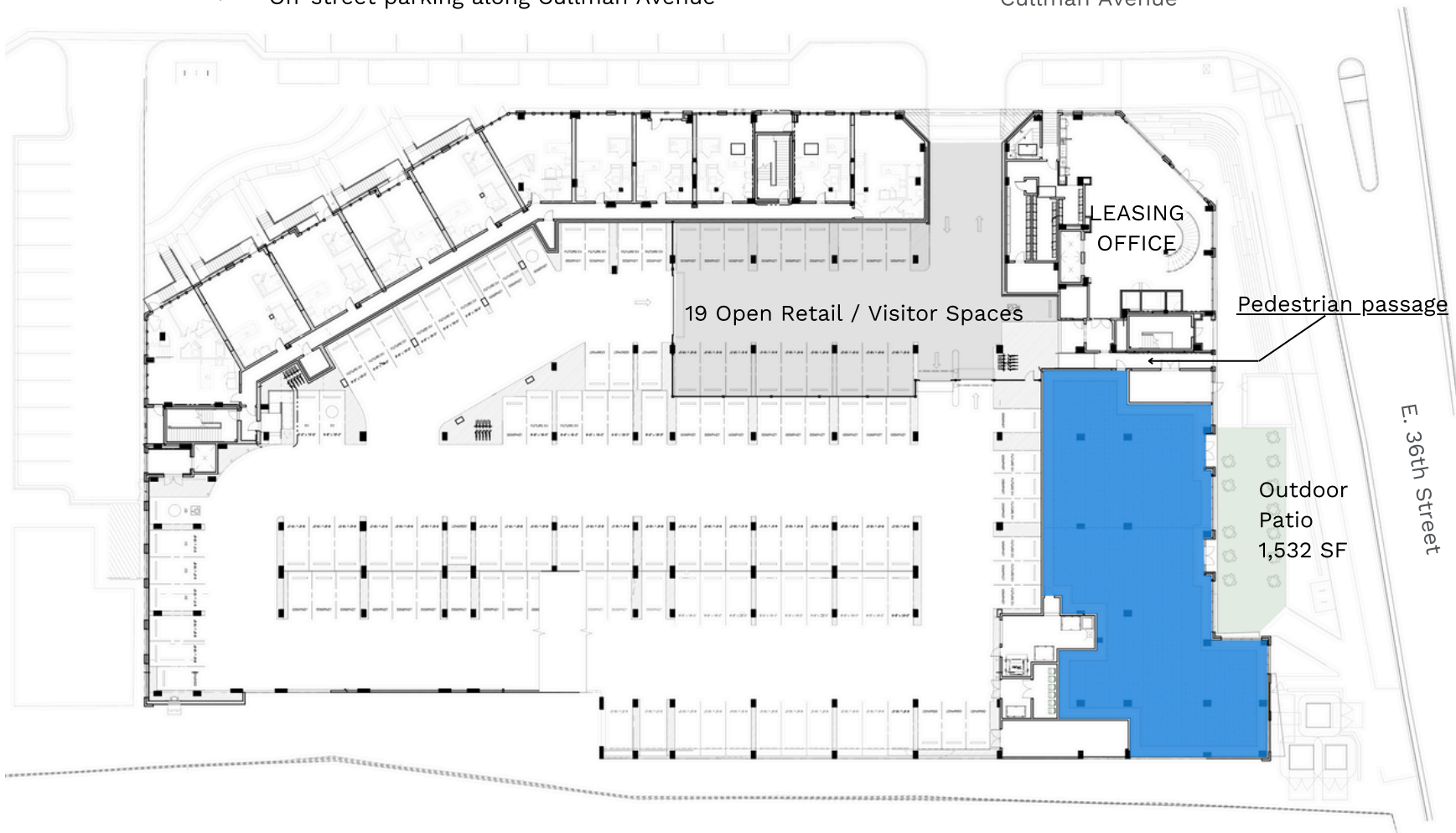




● GROUND LEVEL RETAIL

← On-street parking along Cullman Avenue

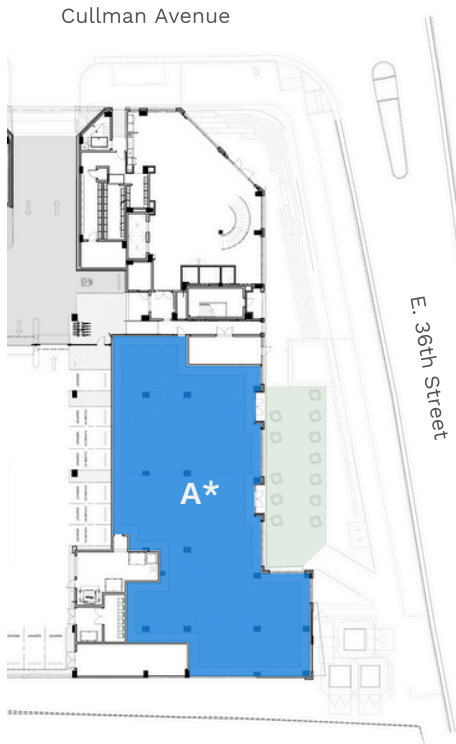
Cullman Avenue



# DEMISING OPTIONS ▾

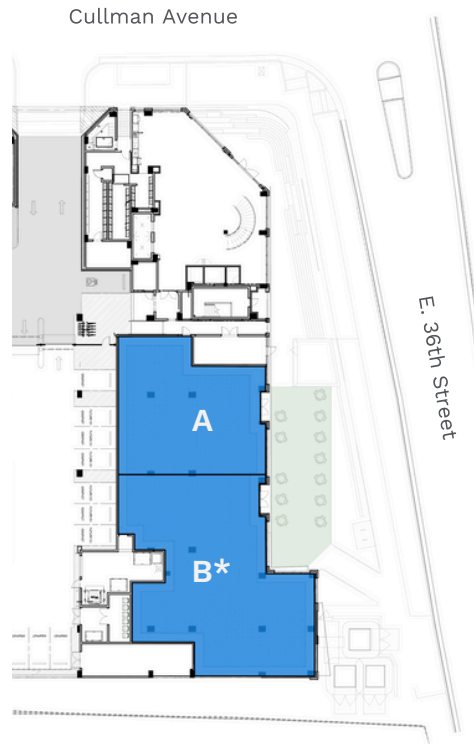
## ● GROUND LEVEL RETAIL

\*vented for restaurant use



### Single Tenant

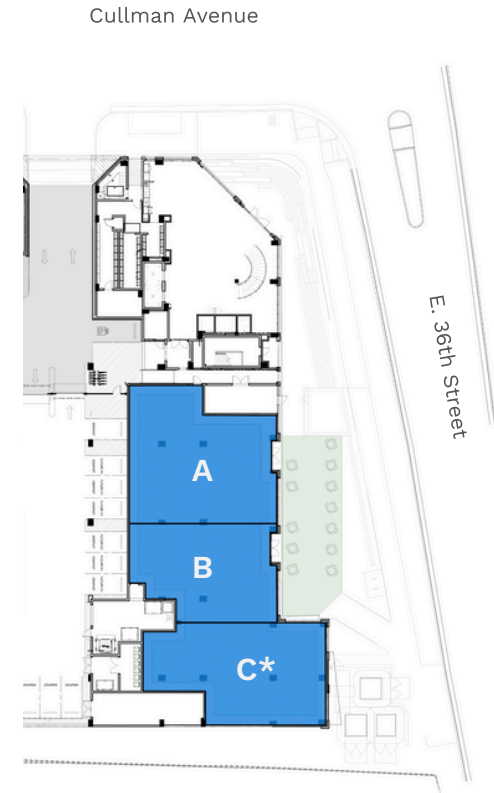
Suite A: 6,791 SF\*



### Two-Tenant

Suite A: 2,642 SF

Suite B: 4,149 SF\*



### Three-Tenant

Suite A: 2,642 SF

Suite B: 1,839 SF

Suite C: 2,310 SF\*



# 300 E. 36th Street

Charlotte, NC 28206



**Thompson Brock**

Thompson@ThriftCRES.com

704-661-8576



PROPERTY DETAILS

CONSTRUCTION UPDATE

AREA MAP

SITE PLAN

LEASING CONTACT