

AveryHall



RETAIL FOR LEASE ▾

CULLMAN
HOUSE NODA





300 E. 36th St
Charlotte, NC 28206



NoDa
Neighborhood



6,791 SF
Available



Street level retail
294-unit apartment building



Steps from 36th Street
light rail station



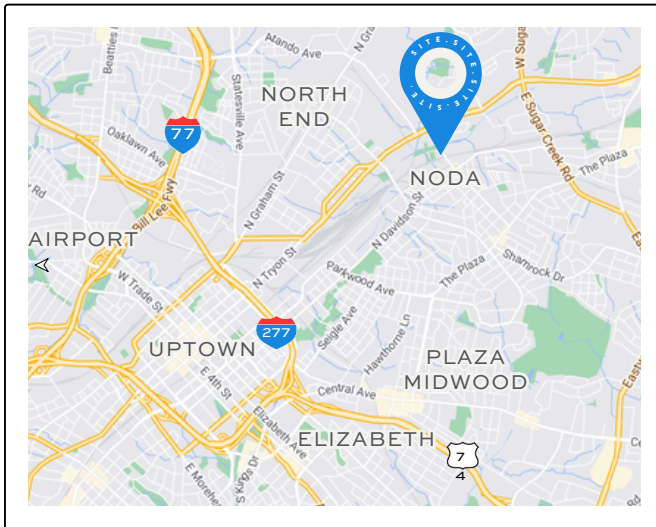
Double height ceilings



Retail shell available Q1 2025



Patio opportunity + vented
for restaurant use

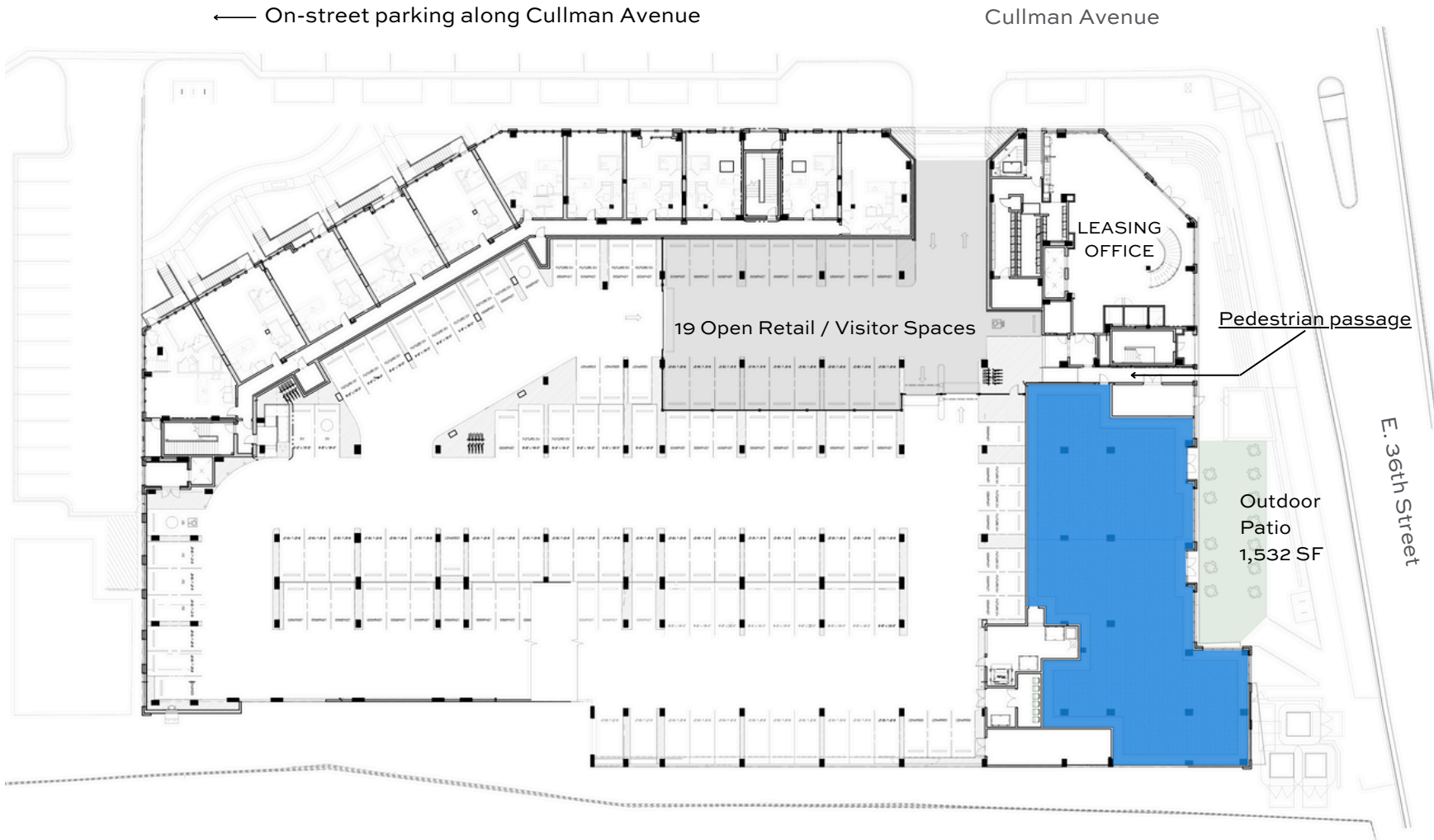


October 2024





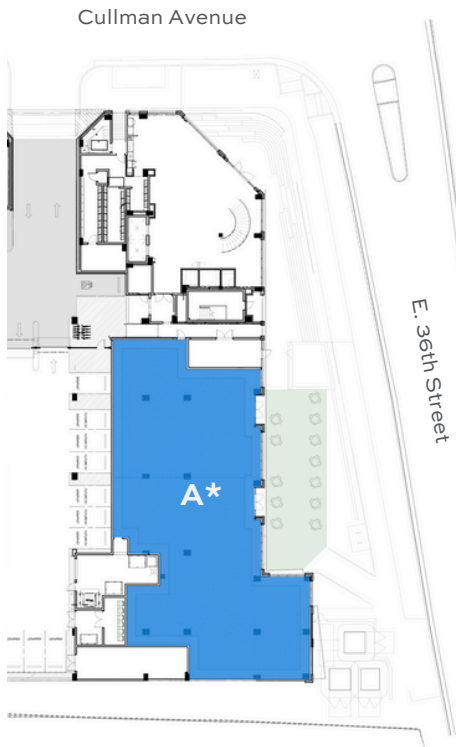
● GROUND LEVEL RETAIL



DEMISING OPTIONS ▾

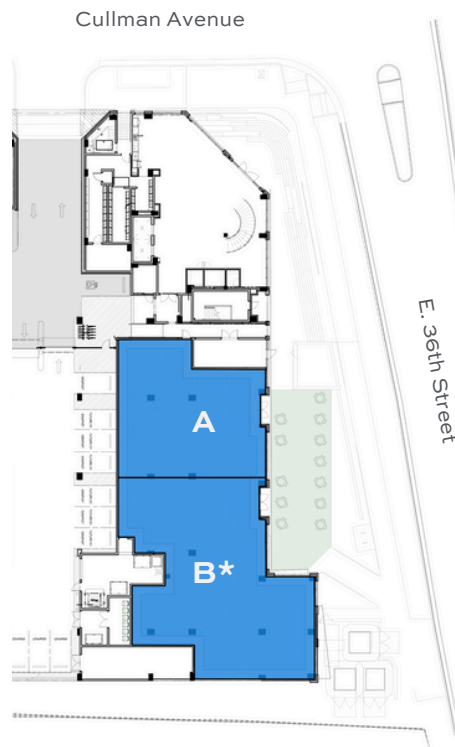
● GROUND LEVEL RETAIL

*vented for restaurant use



Single Tenant

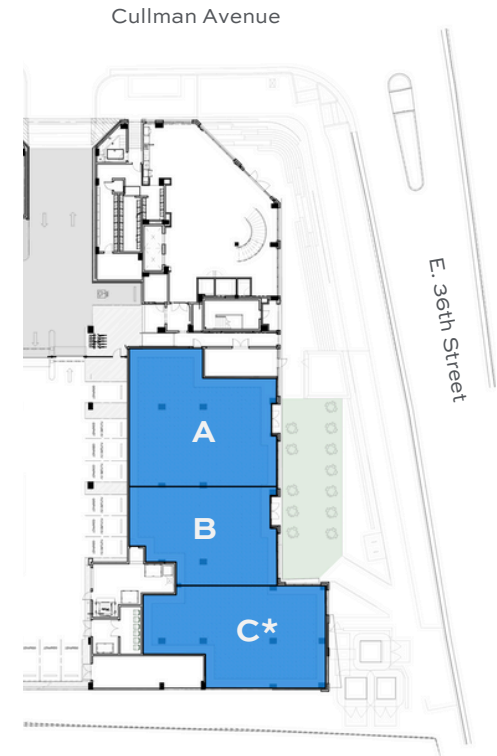
Suite A: 6,791 SF*



Two-Tenant

Suite A: 2,642 SF

Suite B: 4,149 SF*



Three-Tenant

Suite A: 2,642 SF

Suite B: 1,839 SF

Suite C: 2,310 SF*



CULLMAN HOUSE NODA

300 E. 36th Street
Charlotte, NC 28206



Thompson Brock
Thompson@ThriftCRES.com
704-661-8576



PROPERTY DETAILS

CONSTRUCTION UPDATE

AREA MAP

SITE PLAN

LEASING CONTACT